

## **Historic, Archive Document**

Do not assume content reflects current scientific knowledge, policies, or practices.



62.79 Index = 19.72

# NEWEST PLANT

## Introductions

RECEIVED

MAR 30 1950

U.S. Department of Agriculture

### HANSEN SEEDLESS PEAR

A new discovery that will change the pear culture of America! No seeds and scarcely a trace of a core. Large size fruit. Delicious flavor and attractive color. Heavy bearing. Hardy north into Canada. Bears on very young trees. Supply limited, so please order early. Each, \$1.75; 3 for \$5.00.

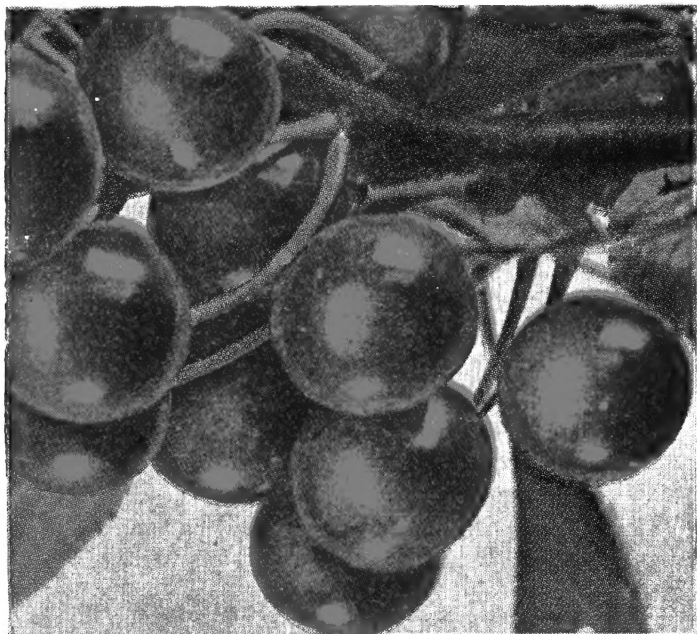
### SODAK PEAR

Seedless and Coreless

Prof. N. E. Hansen's newest pear introduction. No seed and no core. Excellent quality to eat. Big size. Maintains its shape and flavor when preserved. Bears quickly and is very productive. Hardy and blight resistant. Each, \$1.75; 3 for \$5.00.



Hansen Seedless Pear



### NANKING CHERRY

Beautiful red cherries loaded down on dwarf bush-like trees. The fruits are firm and delicious tasting. Enormous crops. Sometimes bear first year planted. Each, \$1.75; 3 for \$5.00.

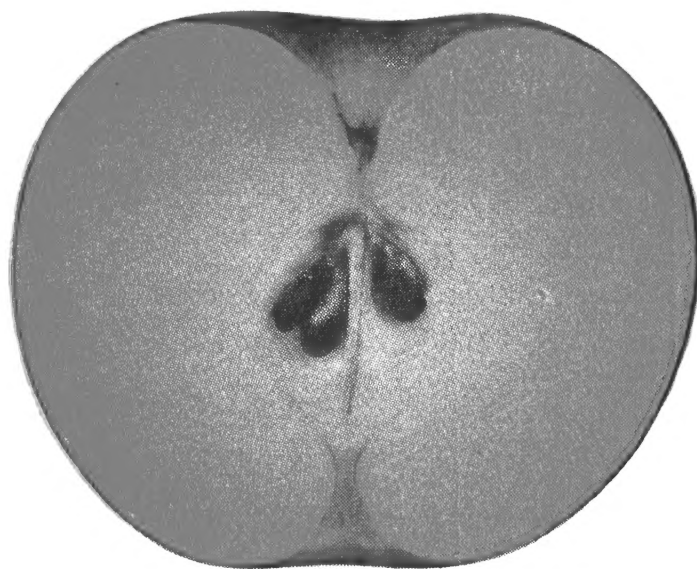
### ALMATA APPLE

!! LARGE RED FLESHED APPLE !!

Most Startling Fruit Discovery of the Century

The new apple the world has been waiting for! A large good quality, brilliant red apple with red flesh from skin to core. Firm and juicy with a sweet pleasant flavor. Makes excellent red sauce and red jelly. Fruit, 3 inches across. Vigorous growing tree produces fruit when very young. Large fragrant red flowers make it an outstanding ornamental as well.

Large .....	Each, \$2.50; 3 For \$7.00
Medium .....	Each, 1.75; 3 For 5.00
Small .....	Each, 1.25; 3 For 3.50

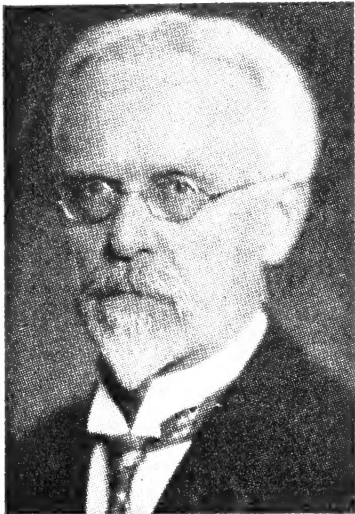


# CARL A. HANSEN NURSERY

BROOKINGS, SOUTH DAKOTA

# 3 Generations of HANSENS

## FOREWORD



Niels Ebbesen Hansen

We always take a great deal of pleasure each year in greeting our many friends everywhere and sending them our catalog. We feel that we know personally everyone who sends us an order. Our customers know we do not offer everything old and new in horticulture, but rather just some of the newest and best and especially hardy stock. Practically everything we offer in this catalog is an introduction of Prof. N. E. Hansen or Carl A. Hansen or Paul R. Hansen. Many hardy fruits and ornamentals, now widely propagated by many nurseries, saw their first light of publicity in these pages.

Many things we have offered sometimes are very startling, and often we have been able to offer them only once. Then we have not been able to list them again for several years because we were not able to catch up on production of them. The demand for them has been so great.



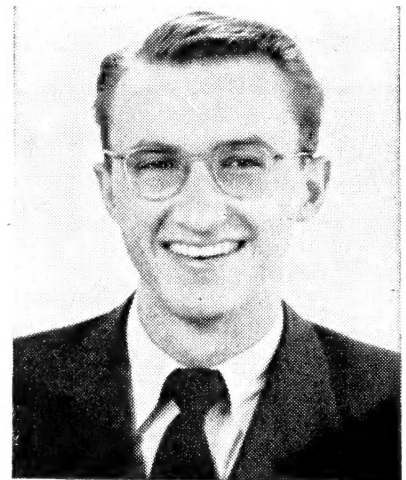
Carl Andreas Hansen



Helen Gladys Shirley  
(Mrs. Carl) (Mrs. Paul)  
Joy Carlene

We would like to especially call your attention to a few new things in this catalog—the startling new apple introduction which has all RED FLESH (offered on cover page), the Manchurian Apricots (page 4), the new Super Bush Cherry (page 12), and new Gold Bush Cherries (page 13). There are many others, but we want to especially call your attention to these new things, because they are especially good and because our supply is short, so if interested, please order them as soon as possible.

CARL A. HANSEN.



Paul Robert Hansen

## LIFE & WORK OF Dr. N. E. HANSEN "TO PLANT THE PRAIRIES AND THE PLAINS"

A Biographical Story of Horticultural Adventure by Mrs. H. J. Taylor

If you are interested in Dr. N. E. Hansen's work in fruit breeding and other plant hybridizing and his plant explorations, get this book.

It tells of his many tours to Russia, Siberia and far-off places in search of new plant material. Of his many strange, interesting and exciting adventures in wild country and with native people.

It tells of his many plant experiments, his processes of plant breeding, selecting and improving.

It is a scientific book of great interest and importance to the scientist and amateur, written in the style of a thrilling novel.

ONLY \$2.25 PREPAID

**TERMS** Send remittance with your order, by cash, money order, or check. If by check, please add 5 cents extra for bank charges. No C. O. D. orders accepted.

No packing charge on orders of \$2.00 or more, but on orders for less than that amount please add 25c.

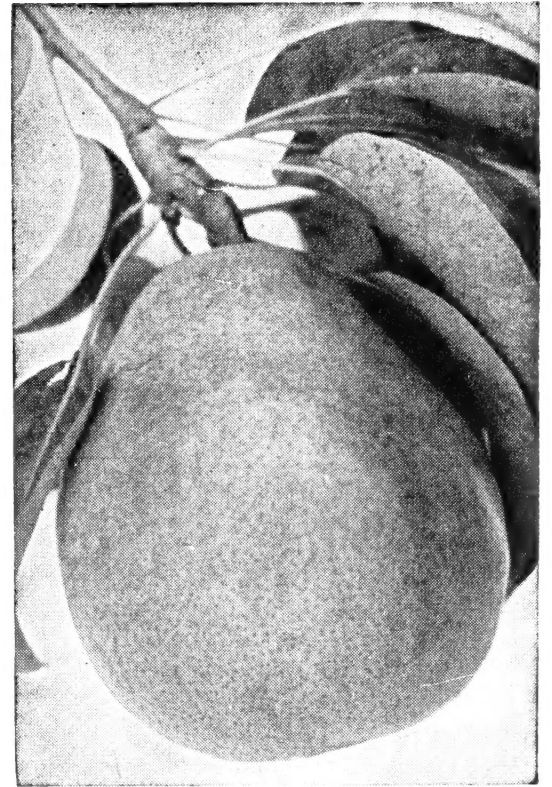
All shipments of Plants and Seeds will be sent collect for the delivery charges unless otherwise stated, by what we consider the best and cheapest way. If you want a small package to be sent by parcel post prepaid, be sure to add enough more for postage (usually about 10% will cover it), with a minimum of 25c per parcel. If seed or plant shipments must be sent to a prepaid station, be sure to include the shipping charges in your remittance.

South Dakota Customers please add the 2% Sales Tax.

# Hansen HARDY PEARS

**HARDY—PRODUCTIVE—GOOD**

These pears were introduced from Siberia and Northern China by Prof. N. E. Hansen, and improved by him. He has taken the pollen from the pears grown in some of the southeastern states for use in producing hardy blight-proof pears of large size and good quality, by mating some of these choicest pears of Europe, the largest pears in the world, with the small-fruited but hardy and blight-proof pears of Siberia. Many crosses have been made by Prof. N. E. Hansen and many hybrids have been originated and some of them have full commercial size. They are perfectly hardy anywhere in the Northwest, free from disease and resistant to fire blight, the dreaded disease of the standard varieties. Pear production has just commenced in the Northwest and it is an honor to be among the first to start their culture in each community. As our stock of these is quite limited it would be well to order early and avoid disappointment.



Ming Pear

## KOLA PEAR

One of Dr. N. E. Hansen's best pear introductions. Hardy into Canada. Resistant to fire blight. Bears on very young trees and will continue to do so for many years to come.

The fruit size is up to 2½ inches or more across and it is of a round oval shape. The flesh is white, mild, sweet and soft. The outer skin is gold with red blush.

Although this pear was originated for the North, it is of comparable quality to other pears in America and hardier than most. **Each, \$1.50; 3 for \$4.00.**

## MING PEAR

Has a delicious, melting flavor. Really a first class dessert pear. The fruit is yellow with minute russet dots. The original tree has proved very resistant to fire-blight, although many other trees adjacent to it died from this disease. Ming is the largest and best pear of Prof. N. E. Hansen's hybrid pears to date. The fruit is of good size, about one and three-fourths by two inches in diameter. This makes a profitable addition to the finest of orchards in the Northwest. **Each, \$1.50; 3 for \$4.00.**

## MANCHURIAN PEAR

This pear from north Manchuria is hardy anywhere. Fruit is rather small, round and of the sand pear type. Most excellent for sauce and preserves and sweet to eat fresh. A most abundant producer under the most trying conditions. **Each, 75c; 3 for \$2.00.**

## AMUR RIVER PEAR

The pear from the North, in Siberia. Fair sized, round in shape. The flesh is white and crisp and sweet. Excellent for preserving whole or in halves. They also make good pickles. Bear when very young and will produce good large annual crops. **Each, 75c; 3 for \$2.00.**

## NORTH CHINA PEAR

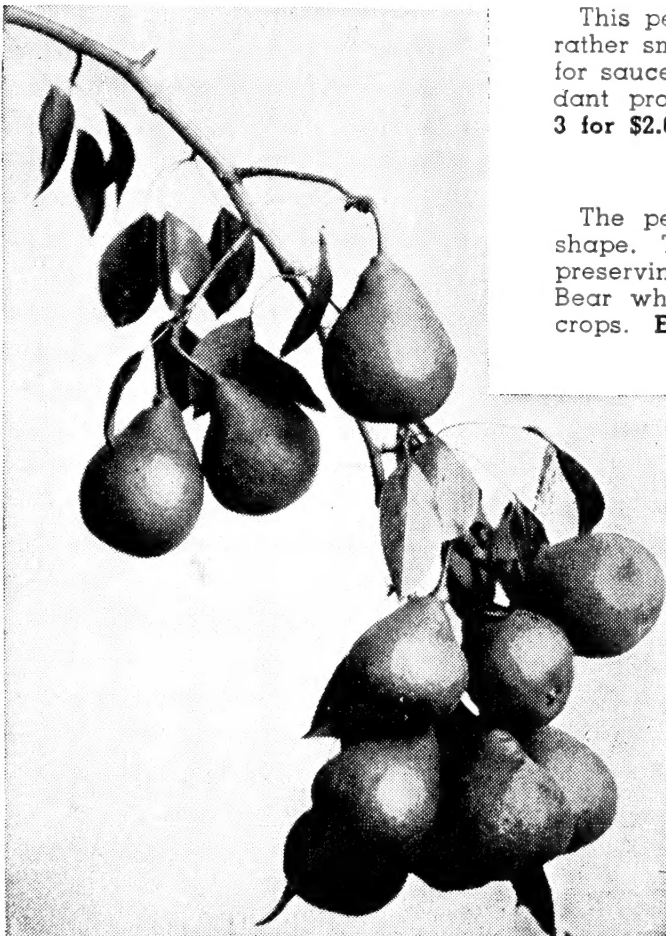
Grown from seed of some of the hardiest pears of North China. Of the sand pear type. Strong growth. Fruit good size, juicy and of a pleasant good quality. Good keepers. **Each, 75c; 3 for \$2.00.**

## HANSEN SIBERIAN PEAR

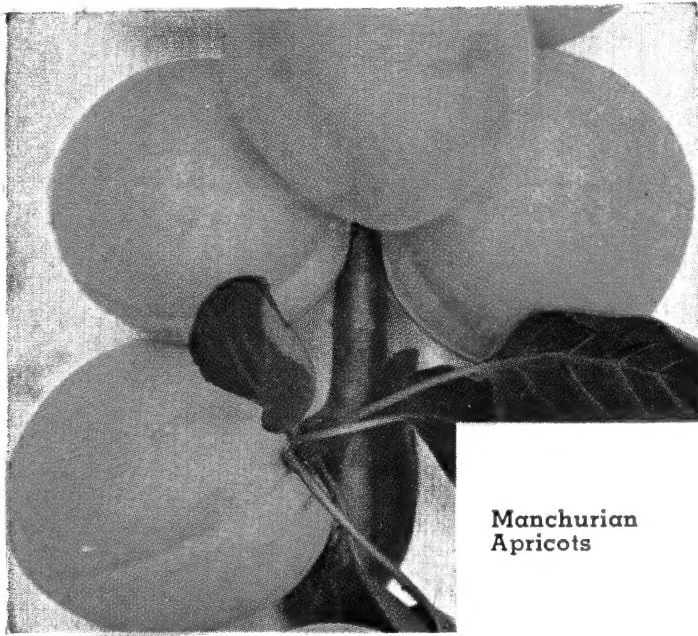
Hardest pear introduced from Siberia by Prof. N. E. Hansen. Of the Russian sand pear type of fruit and the hardest of pears for the North. **Each, 75c; 3 for \$2.00.**

## HARBIN PEAR

Large, vigorous growing tree. Fruit of fair size and quality. Good for eating fresh and cooks into fine sauce and preserves well. **Each, 75c; 3 for \$2.00.**



# Manchurian Apricots



Manchurian Apricots

## FRUIT IN ABUNDANCE FOR EVERYONE

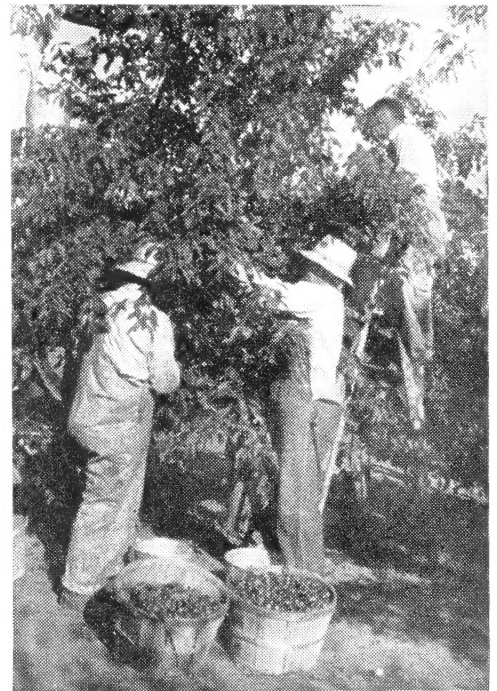
### Hardy—Quick to Bear

No fruit has jumped into popularity and had such sudden fame as have Prof. N. E. Hansen's new Hardy Manchurian Apricots. We offer here some plants from the original strain from which he introduced his famous six varieties, listed and described on the opposite page.

If you like good fresh fruit, picked from your own trees, you should have at least a few of these new hardy Apricot trees. They will afford you the greatest satisfaction and pleasure with their abundance of good, tree-ripened fruit. It is hard to beat their dependable fruit production year after year.

The Manchurian Apricots are hardy in the coldest places. Like the other Hansen Apricots, they apparently have an almost frost-proof blossom, as they can set fruit even if the blossoms are caught in a late spring frost. They came from a country where temperatures get as low as 50 and 60 degrees below zero in winter with late spring frosts as a rule, and where hot dry weather prevails in summer, up to 115 degrees during long periods without rain. Yet even these adversities do not seem to bother these hardy apricots from thriving and bearing heavy annual crops of fine large fruit.

If you want really good fruit at the right time, early in July before the plums come on, get some of these new Manchurian Apricot trees now! We have only a comparatively small supply available this year, so be sure to order early.



Plenty of Fruit—Always

## PRICES ON MANCHURIAN APRICOTS

Size	Each	For 3	For 6	For 12
Large .....	\$1.50	\$4.00	\$7.50	\$14.50
Medium .....	1.00	2.75	5.00	9.50
Small .....	.75	2.00	3.50	6.50

## Big Special Combination Offer

2—Hansen Apricots, Your Selection of Those  
Described on Page 5  
1—Manchurian Apricot

only \$4.50

4—Hansen Apricots, Your Selection of Those  
Described on Page 5  
2—Manchurian Apricots

only \$9.00



# The New HANSEN APRICOTS

*Extremely Hardy  
... Very Drouth Resistant*

Beautiful  
Fragrant  
Pink  
Flowers

## Fruits On Very Young Trees

We offer for a short time, Hansen's new sensational Northwest hardy apricots. Just recently introduced by Prof. N. E. Hansen, of South Dakota State College, who has been working for many years to produce hardy apricots that would be good eating and large size and still would withstand the rigors of Dakota's cold and drouth.

Those offered herewith are his best introductions to date. We give a brief description of each, though they are all good and it is rather hard to say just which one is best. Only time, experience, and tests can best prove that.

Two very important points of interest stand out in regard to these new apricots. One is that they are perhaps one of the most drouth resistant of all trees, coming through the terrible drouths of 1933, 1934 and 1935 with flying colors—full foliage and no apparent effect whatever from the dry, hot weather, and with a great crop of fruit. The second point is that they are hardy almost anywhere in America, standing and bearing well in climates getting as low as 50 to 60 below zero.

PLANT AN ORCHARD OF  
**HANSEN APRICOTS**  
AND REAP YOUR REWARD  
FOR YEARS TO COME!

**CHOW.** Very heavy producer. Yellow fruit that is good to eat fresh and when cooked makes a delightful sauce of quality.

**MANCHU.** Large fruit in heavy crop. Yellow. Tops in size and quality. Cooks up into excellent, pale yellow sauce.

**ANDA.** Heavy crops in late season. Freestone. Fruit of good size. Stays firm even when cooked. One of the best in quality.

**TOLA.** Large, freestone fruit. Very good flavor. Makes excellent quality sauce. This one ripens early in the season.

**NINGUTA.** One of the mildest and best in flavor. Very heavy crop, ripening late in season. Large, yellow, with red blush.

**MANDARIN.** Rich yellow, large fruit. One of the best in quality for eating fresh or for making into delicious sauce.



*Large*



*Fine*



*Fruit*



**Hansen Hardy  
Apricot Prices  
\$1.75 EACH**

# HANSEN IMPROVED

## Easy to Grow . . .

*Good Flavor - Highly Productive -*



Beautiful in Spring Flower.

**The Development of Years.** Hansen Improved Bush Cherries are the result of over forty years of untiring selection work by the great plant wizard, Prof. N. E. Hansen at South Dakota State College, Brookings. He has developed what was formerly the rather small, little known, western South Dakota Dwarf Bush Cherry, into a fruit of large size, desirable taste, good habits, wonderful bearing, and beautiful in flower, fruit and foliage.

**Fruit of Good Quality.** The fruit is good to eat from the bush, is fine in sauce and makes a wonderful jam of the most superb flavor and rich color imaginable.

**Grows Bush-Like.** Though the fruit of this cherry resembles a cherry in size and shape, the plant itself grows in a bush form, branching and bearing from the ground up. Usually bears the year after planting. It always retains its dwarf stature which is of fine value for planting in the garden, as it doesn't take up near the room of an ordinary plum tree and yet often bears more.

**Beautiful in Plantings.** In landscape planting a few of the bush cherries are very desirable as they are dwarf and bushy, and a great aid in foundation covering.

The foliage, a beautiful silvery green, turns to a rich red and gold in fall, adding a very desirable color touch to landscape plantings.



N. E. Hansen With Branches of the Hansen Bush Cherry.

The profuse masses of white flowers in early spring, completely covering the bushes, are a glorious sight. The fruit later is ornamental as well as useful.

### FRUITS IN ONE YEAR!

EXTRA SPECIAL 1 1 1

Large Three-Year Old  
BUSH CHERRIES

Ready to Bear This Year

\$1.00 Each; 3 for \$2.75;  
6 for \$5.00.

**A Desirable Good Fruit and Ornamental for Extensive Planting**



# BUSH CHERRIES

**Sure to Produce** *Hardy Everywhere*

*Disease Resistant*

**Makes a Good Low Hedge.**

Because of their dwarf bushy habit these Hansen Improved Bush Cherries make a most beautiful silvery green ornamental low hedge for the front lawn, as well as in the garden.

**Hardy Everywhere—Disease Resistant.**

The hardiness of these Bush Cherries is unquestioned. They have been used as the sires in a number of Prof. N. E. Hansen's introductions, because he knew it would give the new variety the hardiness they need to withstand the cold and adverse weather conditions we often get. Their sturdiness and resistance to disease is another outstanding characteristic.



Linda Darnell, Columbia Pictures Star, about to plant one of our Hansen Bush Cherries that we sell in a special wrap through F. W. Woolworth Co., S. H. Kress & Co., and many of the other largest department stores throughout the country.

## Plant These HANSEN BUSH CHERRIES Because ...

- 1—They are easy to grow and perfectly hardy everywhere.
- 2—Good to eat fresh and make the most delicious preserves.
- 3—Quick to bear. Bear heavy, and annually.
- 4—Are dwarf growing, bushy, need little room.
- 5—Are excellent for hedges or ornamental shrubs.

### RECOMMENDATION FOR PLANTING

For best results for fruiting these new Improved Hansen Bush Cherries should be planted 2 to 4 feet apart, in rows 4 to 6 feet apart. Plant two or more for better pollination.

Around the home for beauty and use, plant them anywhere in groups.

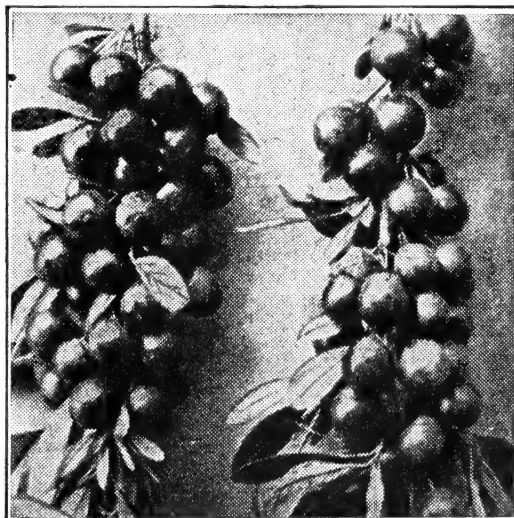
As a hedge they may be planted close, 1 to 1½ feet apart, and may be kept trimmed, though they won't bear as much that way.

Plant them in abundance and have fine fruit for years to come.

### NEW LOW PRICES ON HANSEN BUSH CHERRIES

All Heavy, Well Branched, Strong Rooted, Bushy Trees.

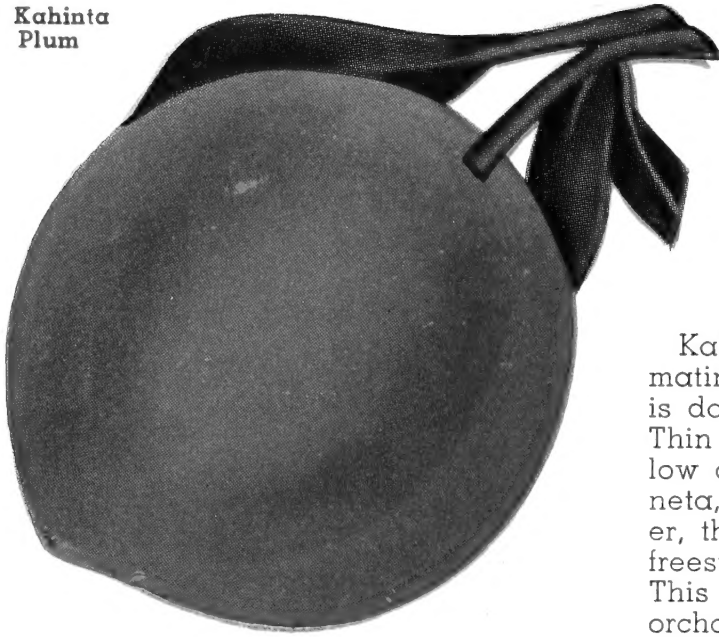
Size	Each	Per 3	Per 6	Per 12	Per 25
Large, Two-Year....	\$.75	\$2.00	\$3.75	\$7.25	\$14.50
Medium, Two-Year	.50	1.35	2.50	4.75	9.50
Small, Two-Year....	.35	1.00	1.85	3.50	7.00



Masses of Fruit Completely Cover the Branches

**Everywhere—Will Be Planted by the Millions Thruout the World!**

Kahinta Plum



# KAHINTA PLUM

WORTHY OF HIGHEST PRAISE

Kahinta has fruit of excellent quality, approximating that of the peach in excellence. The fruit is dark red, roundish, slightly oval, very heavy. Thin skin with no acerbity. The flesh is firm, yellow and very sweet. It is a good deal like Warena, as large or larger, but not as heavy a bearer, though it is a more consistent bearer and is freestone. Has a very good flavor and quality. This plum is worthy of a place in the finest of orchards.

## Sapa CHERRY PLUM

Dark Purple-Red Flesh and Skin

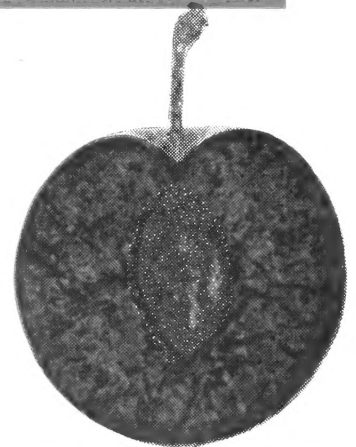
HARDY . . GOOD . . PRODUCTIVE

Early Bearing

Semi-Dwarf

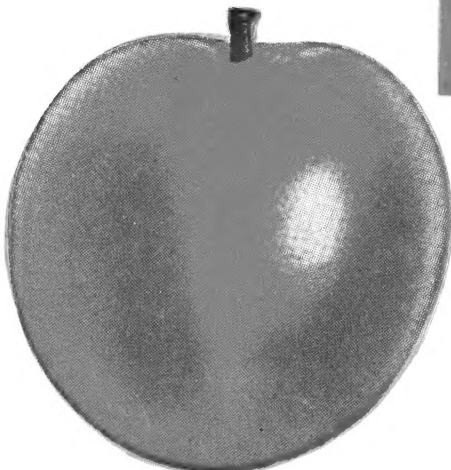
One of the Most Popular Hansen Plums

Sapa is the Sioux Indian word for "black," and alludes to the skin, flesh and the juice of this remarkable hybrid. The fruit has rich, dark purple-red skin, flesh and juice. The tree is bush cherry-like in habit, forming fruit buds freely on one-year trees. The rich purple color of the skin is dulled at first by being over-spread with a thin gray, which will disappear as soon as the fruit has ripened thoroughly. Sapa bears freely on one-year shoots and has attained much popularity. Sapa is early, large, productive, and very hardy; very good to eat fresh, and makes delightful preserves and jams.



Rich Dark Red Flesh

PRICES FOR KAHINTA, SAPA, TECUMSEH				
Size	Each	Per 3	Per 6	Per 12
Large	\$1.75	\$5.00	\$9.50	\$18.00
Medium	1.25	3.50	6.50	12.50
Extra Large, Ready to Bear, \$2.25 Each; 3 for \$6.50.				



Tecumseh Plum

# TECUMSEH PLUM

PROCLAIMED THE BEST

Surely an interesting plum as it is a combination of five species. A real "melting pot" of the plums of the world. The fruit is extra large in size and has an excellent flavor, a real fancy, extra early variety. Many think Tecumseh is one of the best of all the Hansen plums in quality. It is splendid for eating and keeps well. It is also a good cooking plum and its large red fruit coming on very early in the season, make extra fancy flavored preserves, superior in flavor and quality to ordinary varieties.

# WANETA

*The Giant of Hardy*  
**PLUMS**

These large plums measure up to 2 inches in diameter. They are highly flavored, of delicious dessert quality. Richly colored red skin, free from acerbity,, a small pit, and fine firm yellow flesh.



WANETA

The plums described here are six of the most famous Hansen Plums. Because they bear when very young, are very hardy, best in flavor and more sure to produce year after year.

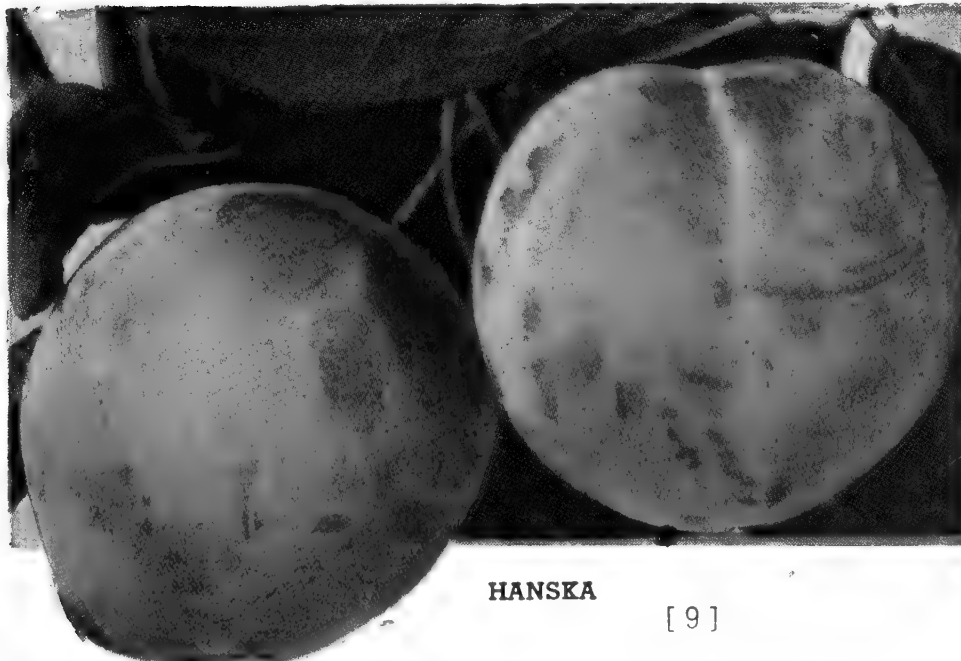


OPATA

## OPATA CHERRY PLUM

Excellent quality. The fruit is dark purplish red with firm, green flesh. Fruits freely on one-year old shoots. Season very early.

PRICES FOR WANETA, HANSKA, OPATA				
Size	Each	Per 3	Per 6	Per 12
Large .....	\$1.75	\$5.00	\$9.50	\$18.00
Medium .....	1.25	3.50	6.50	12.50
Extra Large, Ready to Bear, \$2.25 Each; 3 for \$6.50.				



HANSKA

## HANSKA APRICOT PLUM

A hybrid of the wild northwestern plum and the large, firm fleshed, fragrant apricot plum of China. In fruit the Hanska closely resembles its Chinese parent in form, color, fragrance, quality and firmness of flesh. The pit is very small.



# TOKA PLUM

**FIRM FRUIT—EXCELLENT QUALITY  
GOOD KEEPER**

This plum is very much like Hanska in fruit but the tree has a somewhat different habit. Toka has such erect, strong, and stocky growth, really a model tree. One of the nicest looking fruit trees you will see. It is an early and very heavy bearer. It has large and remarkably firm fruit of a most rich fragrance and excellent quality, which makes it a good plum for the market. It is a very fine plum for eating fresh and for canning.

### PRICES FOR TOKA PLUM

Size	Each	Per 3	Per 6	Per 12
Large .....	\$1.75	\$5.00	\$9.50	\$18.00
Medium .....	1.25	3.50	6.50	12.50

Extra Large, Ready to Bear, \$2.25 Each; 3 for \$6.50.

# KAGA PLUM

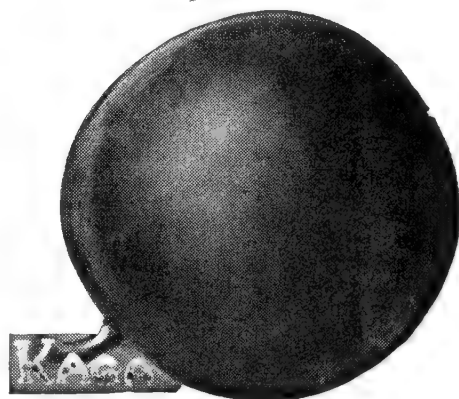
**FREESTONE—SUPERB FLAVOR  
GOOD COOKER**

Another superb plum of apricot flavor and fragrance. It is a heavy annual bearer of fruit that is regular in form, roundish, slightly oval, freestone. The flesh is a rich orange-red color and very firm. When cooked a few minutes in sugar syrup, the sauce has a rich Chinese apricot flavor, which is superior to any of the native plums and to the ordinary California plums received in this market. The tree is of good upright habit.

### PRICES FOR KAGA PLUM

Size	Each	Per 3	Per 6	Per 12
Large .....	\$1.75	\$5.00	\$9.50	\$18.00
Medium .....	1.25	3.50	6.50	12.50

Extra Large, Ready to Bear, \$2.25 Each; 3 for \$6.50.

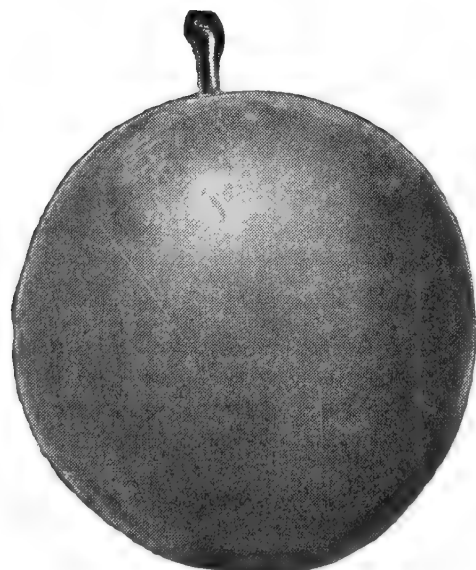


# Hansen's Special HYBRID PLUM SELECTIONS

**Very Hardy . . . Heavy Bearers**

These are some selected Plum Hybrids we are offering for the first time. They are selected seedlings grown from mixed plantings of the best of Prof. N. E. Hansen's famous hybrid plums. By experimentation and selection we have found that they seem to have all maintained the high standard of hardiness and many have the high quality flavor and size of Prof. N. E. Hansen's other plums.

They are all good eating, good size, prolific bearers, and make the most delicious plum preserves. They are excellent pollenizers and will make your other plums bear better. We only have a limited quantity to offer this year, so order early.



### HANSEN'S SPECIAL PLUM

Size	Each	Per 3	Per 6	Per 12
Large, 4-5 Ft.....	\$1.00	\$2.50	\$4.50	\$8.50
Medium, 3-4 Ft.....	.75	2.00	3.50	6.50
Small, 2-3 Ft.....	.40	1.00	1.75	3.25

# Dakota Producer Plums

## HANSEN IMPROVED

These are plums which we have been selecting and improving for a number of plant generations. They are all hardy and good to eat. They will stand temperatures of downwards to 40 degrees below zero in winter and upwards to 115 degrees in summer.

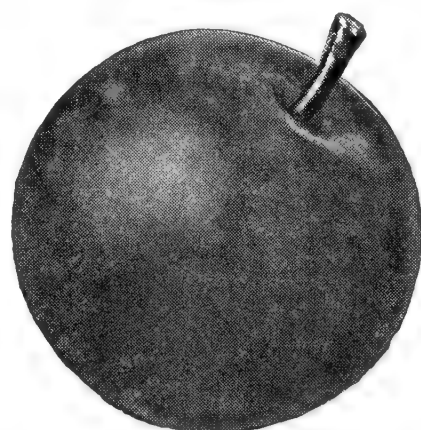
The fruit of these plums varies in size, from about 3/4-inch to 1 1/2 inches and over. They have been developed from the native wild plums of the Dakotas, Minnesota and Canada. Their yield is abundant—plenty for eating, plenty for preserves.

It is hard to beat good old fashioned plum jam as a spread for bread. Our aim with Dakota Producer Plums has been to improve this; to improve one of nature's best, rich foods.

Because of the natural vigor of growth and fruiting power, they are especially good to pollinate the various hybrid plums in your yard and orchard. They will help all of your plums to set their full crop capacity of fruit, which they may not now produce because of weak pollen.



Beautiful in Flower

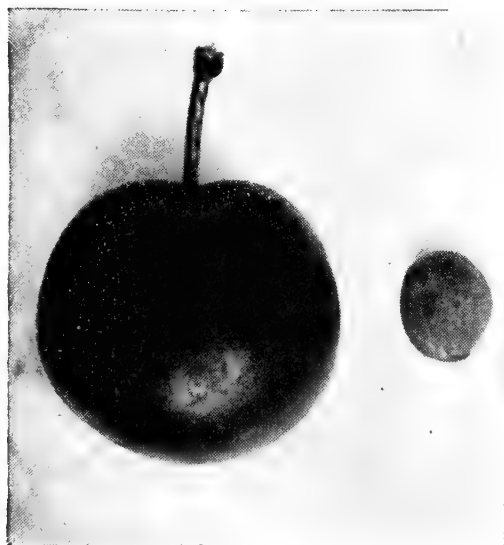


Plentiful in Fruit

### PRICES FOR DAKOTA PRODUCER PLUMS

Size	Each	Per 3	Per 6	Per 12	Per 25
Large, 4 to 6 feet.....	\$ .65	\$1.75	\$3.35	\$6.50	\$12.50
Medium, 3 to 5 feet.....	.50	1.35	2.60	5.00	9.50
Small, 2 to 4 feet.....	.35	1.00	1.85	3.50	6.50

Extra Large, Ready to Bear, \$1.25 Each.



Tom Thumb Cherry

## Tom Thumb Cherry

### Hardiness - Flavor - Productiveness

This new fruit has had a surprisingly quick leap to fame. Nothing like it anywhere. Though growing but knee high can bear a bushel of fruit. Exceedingly sweet flesh. Delicious in sauce and jams.

For canning, they are perhaps the best of any of the Hansen Hybrid Cherries in preserving the shape of the whole fruit, much the same as the canned cherries you buy. Fruit good sized. Flesh dark reddish purple. Hardy far north into Canada.

Tom Thumb is a low bush just right for protection by snow drifts, bearing an abundant crop of fruit the year after planting and annually thereafter. Everyone should plant more Tom Thumb Cherries for sure results and good quality.

LARGE BEARING SIZE TREES  
\$1.75 EACH

# HANSEN SUPER BUSH CHERRY

## For EVERYONE to Enjoy

A sensational new flavor and a new method of fruit culture. Immense crops of fruits produced on a small area. Fruit is large, of good flavor and quality to eat fresh and makes the most wonderful rich jams and jelly of delicious flavor. The selection and improvement of Hansen Bush Cherries has been carried on by Prof. N. E. Hansen for over 45 years. These improved new Super Bush Cherries are the results of the work of many years of selection from countless thousands of plants. They are the Super Type—the biggest in size, the best in flavor, the greatest in productiveness and most beautiful in bloom.



## Special Offer While They Last

HANSEN SUPER BUSH CHERRY. 3 Yr. Size—Ready to Bear This Year. \$1.25 Each; 3 for \$3.50; 6 for \$6.50.



Fruits on this branch are actual size



A PLANT OF HANSEN SUPER BUSH CHERRY

# GOLD BUSH CHERRIES

All New Introductions of Carl A. Hansen



**AMBER GIRL CHERRY.** One you can eat and eat and eat and still ask for more, it is so good. It is especially good fresh from the tree, and makes a fine orange colored nectar.

**GOLDEN BOY CHERRY.** One of the largest if not the largest. Almost up to an inch in diameter. Good flavor. Highly colored, rich gold skin and light gold flesh.

**WHITE GOLD CHERRY.** Has such a white-gold like skin and translucent flesh. You can see the pit when you hold it to the light. Sweet, large, heavy producer.

**HONEY CHERRY.** Exceedingly sweet. Skin and flesh is the color of pure, clear honey. Highest flavored jam and honey sweet preserves.

**CHUM CHERRY.** Quite freestone, with firm flesh of excellent quality to eat out of hand from the bushes.

**PRICES ON THE ABOVE NEW GOLD BUSH CHERRIES**

Each, \$2.25; 3 for \$6.50.

## Ural Mountain CHERRY

**NEW BRIGHT RED BUSH CHERRY**

A DR. N. E. HANSEN INTRODUCTION

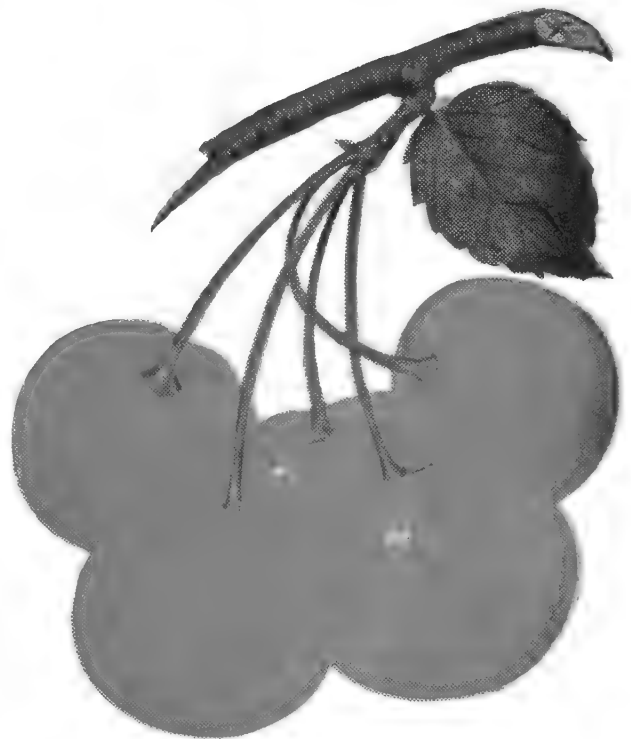
First Time Offered

•

This new dwarf cherry is really something to rave about. The fruit is good sized, a clear bright red in color from skin to pit, and excellent eating. Comparable in quality to the best California tree cherry fruits on the market. The flesh and skin are firm and stand up well when picked.

Good to eat fresh and when preserved will make nice candied cherries for cakes and ice cream.

These are a new introduction this year and we have but a very limited number to offer, so please order early. For we do know these are going to be in great demand in the coming years. Be the first in your community to have them.



**PRICES While They Last:**

Each.....\$2.50    3 for.....\$6.50    6 for.....\$12.00

# Hansen's OKA CHERRY

**VERY HARDY**

**DWARF HABIT**

**EARLY BEARING**

**WINE-RED FLESH**

**LARGE FRUIT**



## DELICIOUS FLAVOR!

**NEWEST AND BEST**

One of Prof. N. E. Hansen's latest cherry-plum introductions and considered his best so far.

## DARK, LUSCIOUS, WINE-RED FLESH

The flesh color is a rich, intense purplish black red. It is in all a very remarkable fruit to look at and surely a delight to eat. Jelly and jam made from Oka Cherries are as deliciously sweet as they are beautiful to look at.

The tree of Oka has a dwarf bushy habit and bears from the ground up. This remarkable feature is of unique value when harvesting the fruit. No need for a stepladder for all the fruit is within easy reach. But the dwarf size in no way indicates the size of the crop of cherries, for the strength of the plant goes into fruit production and not into surplus tree growth.

## EARLY BEARING—VERY HARDY

Oka Cherry, like the other of Prof. N. E. Hansen's Bush Cherry hybrids, bears extremely early—always, if the season is at all favorable, the year after planting.



Large and Fine  
Wine Red Flesh



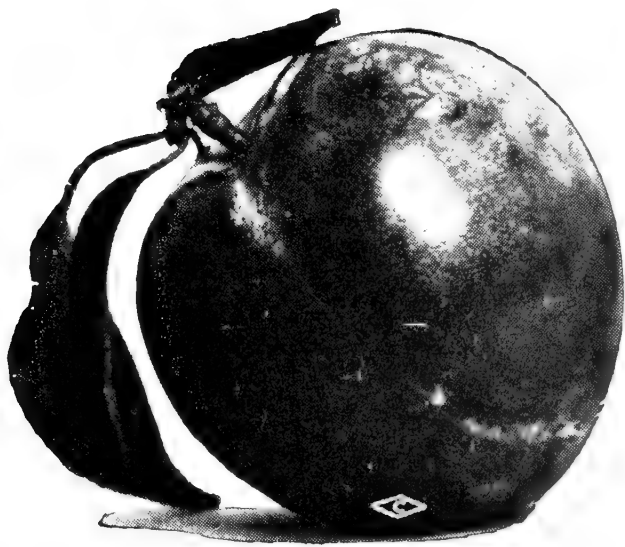
Most Beautiful in Flower

### PRICES for OKA CHERRY

Size	Each	3	6
Large .....	\$1.75	\$5.00	\$9.50
Medium .....	1.25	3.50	6.50

Extra Large, Ready to Bear, \$2.25 Each.





# SUPERIOR PLUM

DESSERT QUALITY

A sensational new plum. Very large, jumbo in size. Flesh firm and of delicious quality. Beautiful red color and delicious to eat out of hand. One of the better plums for home and market.

## PRICES FOR SUPERIOR PLUM

Size	Each	Per 3	Per 6	Per 12
Large .....	\$1.75	\$5.00	\$9.50	\$18.00
Medium .....	1.25	3.50	6.50	12.50

Extra Large, Ready to Bear, \$2.25 Each; 3 for \$6.50.

# Underwood Plum

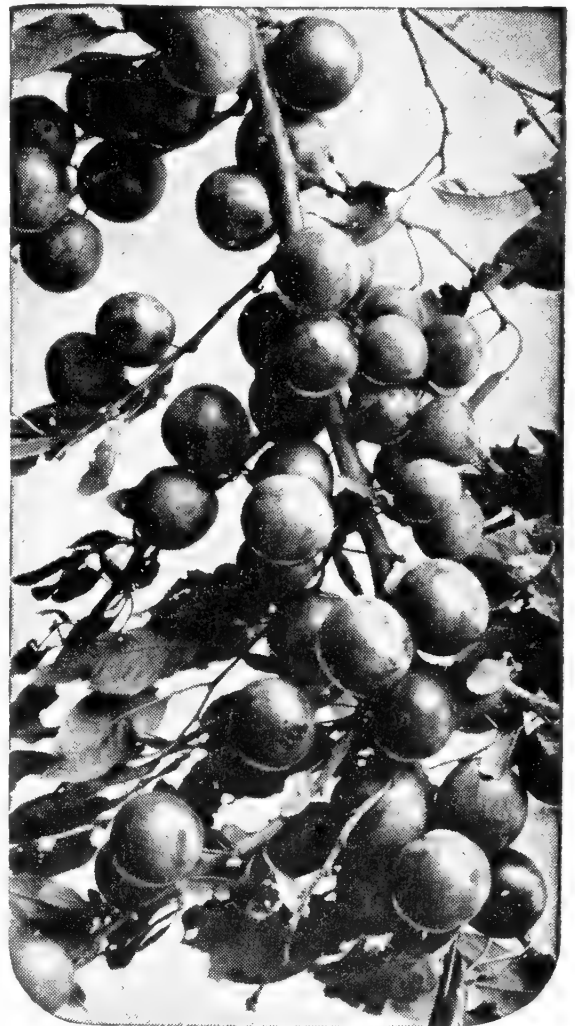
EARLY HARDY

Earliest of the large plums, ripening over a long period. Hardy for northern prairies. Red fruit with firm, yellow flesh.

## PRICES FOR UNDERWOOD PLUM

Size	Each	Per 3	Per 6	Per 12
Large .....	\$1.75	\$5.00	\$9.50	\$18.00
Medium .....	1.25	3.50	6.50	12.50

Extra Large, Ready to Bear, \$2.25 Each; 3 for \$6.50.



# Burbank Plum

One of the better plums of America, with red and orange marbled fruit of more than medium size. Sweet, meaty, yellow flesh. Good for canning and market. Hardy through Iowa and South.

## PRICES FOR BURBANK PLUM

Size	Each	Per 3	Per 6	Per 12
Large .....	\$1.75	\$5.00	\$9.50	\$18.00
Medium .....	1.25	3.50	6.50	12.50

Extra Large, Ready to Bear, \$2.25 Each; 3 for \$6.50.



# Red June Plum

Purplish fruit with blue "bloom," solid yellow flesh. Hardy through Iowa and South.

## PRICES FOR RED JUNE PLUM

Size	Each	Per 3	Per 6	Per 12
Large .....	\$1.75	\$5.00	\$9.50	\$18.00
Medium .....	1.25	3.50	6.50	12.50

Extra Large, Ready to Bear, \$2.25 Each; 3 for \$6.50.

# ANOKA, *the Wonder Apple*

## A MASTERPIECE OF THE FRUIT WORLD



ANOKA—The Best of 10,000 Seedlings

### FINE EATING—VERY PRODUCTIVE

Anoka is a round, red-striped apple of attractive appearance and of good quality. The fruit ripens early, a very good early summer eating apple, with very juicy, pleasant, sub-acid flesh of peculiar characteristic flavor that pleases everybody.

Anoka is surprisingly productive, often loading its branches till they bend nearly to the ground, yet due to its sturdy habit, seldom breaks under the great weight.



Prof. N. E. Hansen, the Plant Wizard, and a Mature Anoka Apple Tree.

### ★ One of Prof. N. E. Hansen's Greatest Introductions

The Anoka is truly the wonder apple of this generation. Anoka has the most remarkable ability in that it will bear on one-year wood and annually, thereafter, the second year after planting. Four year trees have been known to have borne three crops of fruit.



Three-Year Anoka Tree Bearing a Good Crop of Fruit.

### ANOKA APPLE TREE PRICES

Size	Each	Per 3	Per 6	Per 12
Large .....	\$1.25	\$3.50	\$6.50	\$12.50
Medium .....	.75	2.00	3.85	7.50
Small .....	.50	1.35	2.65	5.00

**SPECIAL!** Extra Large 3-year Anoka Trees, Ready to Bear This Year, \$1.75 Each; 3 for \$5.00.

### PLANT THE ANOKA APPLE

The Wonder of the Age—Because:

- 1—Anoka bears the second year after planting.
- 2—Anoka bears large crops of apples every year.
- 3—Anoka is an excellent early summer eating apple.
- 4—Anoka may be planted closer than other apples.
- 5—Anoka is hardy and disease resistant.

# MINJON

## MINNESOTA JONATHAN

A very hardy apple for the North, growing and producing abundant crops where some kinds will not stand the rigors of northern winters.

The fruit is most attractive, a brilliant red and all-red apple, smooth and firm.

This apple has an excellent, "snappy" flavor for eating out of hand, as well as being firm and juicy for baking and making pies.

Minjon closely resembles the Jonathan in type, color, and flavor but is of a hardier strain. It bears abundantly and regularly, and the fruit hangs well on the tree.



### PRICES FOR MINJON APPLE

Size	Each	Per 3	Per 6	Per 12
Small, 2-4 ft.....	\$ .50	\$1.35	\$2.65	\$ 5.00
Medium, 3-5 ft.....	.75	2.00	3.85	7.50
Large, 4-6 ft.....	1.25	3.50	6.50	12.50
Extra Large, 5-7 ft.....	1.75	5.00	9.50	18.00



# GOLDO

## Hardest Winter Apple

Goldo Apple is Prof. N. E. Hansen's best winter apple introduction. It is a hybrid of Grimes Golden and Duchess Apple.

Fruit is of most excellent flavor and an improvement on Grimes Golden. It has the hardiness of the Duchess. It has somewhat the Grimes shape, being truncated, though a little more irregular in general appearance.

Its color is rich golden with pure white flesh. The fruit is large in size,

being up to three to four inches across and three to four inches long.

Goldo is a splendid keeper and will keep in an excellent condition in an ordinary vegetable cellar until late in March.

It usually bears a year or two after planting and heavy and annually thereafter. The tree is perfectly hardy throughout the Northwest. Our stock of Goldo is very scarce this year so be sure to order early if you want some of this excellent new fruit.

**PRICES: Each, \$1.75; 3 for \$5.00.**

# Red Flesh Crab

SOMETHING REAL NEW! DELICIOUS!

## Bright Red Apple Sauce

**Red Flesh, Red Skin, Red Flowers.** This new crab apple introduced by Prof. N. E. Hansen has created a sensation. About 2 to 2½ inches long and 1¼ to 1½ inches in diameter, with intense, dark red flesh.

**Beautiful in Jellies and Sauce.** The most beautiful red you could ask for, cooked alone or with other apples.

**Hardy—Vigorous—Bear Young.** The tree is very sturdy, and completely hardy for the North. It bears at a very young age.

**Good to Eat Fresh.** Red Flesh is so good to eat fresh, having sort of sprightly tart sweet flavor.

**Very Ornamental.** Because its flowers are also a beautiful red color.

PRICE: Per Tree, \$1.75; 3 Trees for \$5.00.

## Joy Crab Apple

A Carl A. Hansen Introduction

A JOY to eat, a JOY to see and a JOY to have in bearing. For it is one of those crab apples that you can just eat and eat and eat.

The JOY CRAB comes on early in the season, just at harvest time. This crab is upwards to about 1½ inches in diameter, is mostly round in shape, slightly irregular and a little truncated, orange yellow with blushes and stripes of red and pink. Very crisp, fine textured flesh, sweet and juicy, with a very delicious flavor. Makes excellent pickled crabs.

We'll wager that the first time your JOY CRAB trees begin to bear, and they do bear very early, usually within a year or two, you will want to eat them all until the crop is gone.

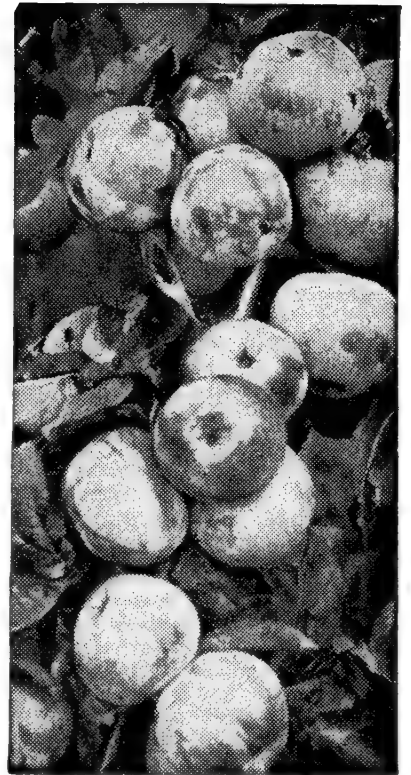
PRICE: Per Tree, \$1.75; 3 Trees for \$5.00.

### SPECIAL!

- 1 Red Flesh
- 1 Joy Crab
- 1 Yellow Sweet
- 1 Dolgo Crab

All for  
Only

**\$5.50**



## Yellow Sweet Apple

An Excellent Early Summer Eating Apple.

A favorite throughout the Northwest. Ripens just at harvest time.

The name describes the delicious fruit. Apples measure over two inches in diameter, and have yellow, tender skin, blushed with pink. The flesh is white, very juicy and sweet. Absolutely hardy, bearing heavy crops.

This variety should be in every family orchard, for early eating apples—children love them!

PRICE: Per Tree, \$1.75; 3 Trees for \$5.00.

# DOLGO . . . Best Jelly Crab

**A MOST REMARKABLE FRUIT.** The most wonderful jelly and pickling crab on the market. Fruit is good size, conical in shape, with a most brilliant, flaming red skin color, a very beautiful sight on the tree. Fruits are full of juice and have a superb, sprightly sweet flavor. With Dolgo it is easy to make bright clear jelly of the most delicious flavor, often as high as 45 glasses of jelly and 8 pints of jam to a single peck of fruit, without a bit of additional fruit pectin.

**FREE FROM BLIGHT—VERY STRONG.** The tree of Dolgo has so far proved free from blight. It makes a very strong growth and forms strong, wide-spreading forks and strong shoulder limbs, which can bear such heavy crops without injury.

**BLOSSOMS FROST HARDY.** Another remarkable characteristic of Dolgo, expressed by Prof. A. E. Yager: "Dolgo Crab, even when in full blossom, survived freezes which killed all other varieties."

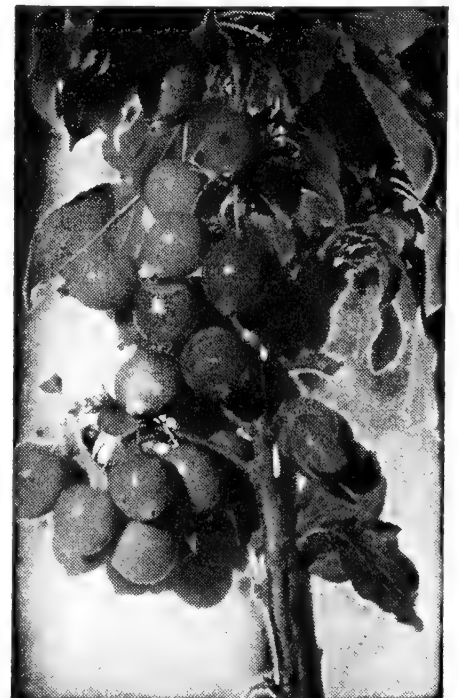
**HARDY FAR NORTH.** Dolgo is perfectly hardy far north into Canada, and is almost a sure annual producer of a fine crop of fruit.

### BEARS VERY EARLY

It is the nature of Dolgo to bear early and it usually bears the second or third year after planting—almost as soon as Anoka.

### PRICES ON DOLGO CRAB

	Each	3 for	6 for
Large .....	\$1.25	\$3.50	\$6.50
Medium .....	.75	2.00	3.50
Extra Large, 3 Yr., \$1.75 Each.			



Brilliant Red Fruit.

# HARDY APPLES

## WEALTHY APPLE

Especially hardy. Bears extremely young, and every year. Red skin and very sweet flesh. A good early apple.

## WHITNEY CRAB

Popular eating crab, Delicious flavor. Bears young and very heavily and is also very hardy.

## JONATHAN APPLE

Firm, crisp, tender and juicy, with rich flavor. A good keeper for the winter holidays. Extremely long lived.

## GRIMES GOLDEN APPLE

A favorite yellow winter apple. One of the best.

## WINESAP APPLE

A large, very attractive dark red apple of excellent flavor and quality.

## PRAIRIE SPY APPLE

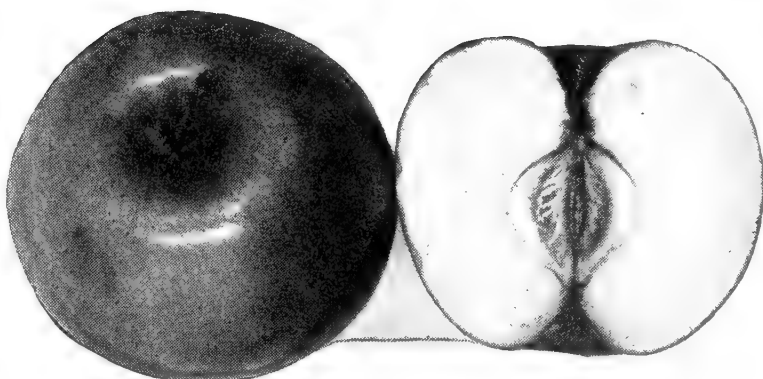
Heavy crops of extra fine flavored, red apples. Late keeper. Good cooker.

## COURTLAND APPLE

A big red apple of superb quality. For eating and cooking. Immense crops.

## NORTHWEST GREENING

Giant, firm grained, crisp, juicy, yellowish green, cooking and eating apple.



Wealthy Apple

## DELICIOUS APPLE

Tender, crisp and juicy and mild in flavor. A splendid keeper. Ideal for market.

## YELLOW TRANSPARENT

An old favorite yellow summer apple. Very hardy and productive. Of high quality.

## BEACON APPLE

A very exceptional, early apple of longer keeping quality. Very hardy, early maturing.

## HARALSON APPLE

Large, red apple which keeps all winter in regular storage. Bears early and heavily.

### PRICES OF ABOVE APPLES AND CRABS

Small, 2-4 ft.....	Each, \$ .50; 3 for \$1.35; 6 for \$2.65; 12 for \$ 5.00
Medium, 3-5 ft.....	Each, .75; 3 for 2.00; 6 for 3.85; 12 for 7.50
Large, 4-6 ft.....	Each, 1.25; 3 for 3.50; 6 for 6.50; 12 for 12.50
Extra Large, 5-7 ft.....	Each, 1.75; 3 for 5.00; 6 for 9.50; 12 for 18.00

# 3-in-1 APPLE

## Anoka-Dolgo-Goldo . . . All-In-One-Tree

Now you can have Anoka Apple, Dolgo Crab, and Goldo Apple, three of the most famous of Professor N. E. Hansen's apple and crab apple introductions, all on one tree. This new type of apple tree has been sweeping the country with a tremendous surge of popularity the last few years, and now you can have your choicest varieties of apples and crabs on one single tree.

All the fruit you want to eat, of the best kinds, in only one-third the space, because all the varieties are growing on one tree. This accomplishment is brought about by special methods of grafting so that all varieties are grown on one single hardy tree.

Our supply of these new trees is not very great this year so please place your orders as early as possible.

### Special Prices . . .

**3-in-1 APPLE TREES - - \$1.75 each; 3 for \$5.00**

# NEW INTRODUCTIONS



## Winekist Apple

TRADE-MARK—Registry Applied For

### A Carl A. Hansen Introduction First Time Offered

Clear red flesh from skin to core. Beautiful to look at and most delightful to eat. It has a sprightly sweet, most distinctive flavor. Makes the most beautiful looking and delicious tasting sauce, jam and jelly, the color of Port Wine.

It is hardy far north into Canada. It produces big crops on very young trees. The fruit gets up to 3 inches in diameter, with an outside coloring of clear, dark red, sometimes overstriped with darker red.

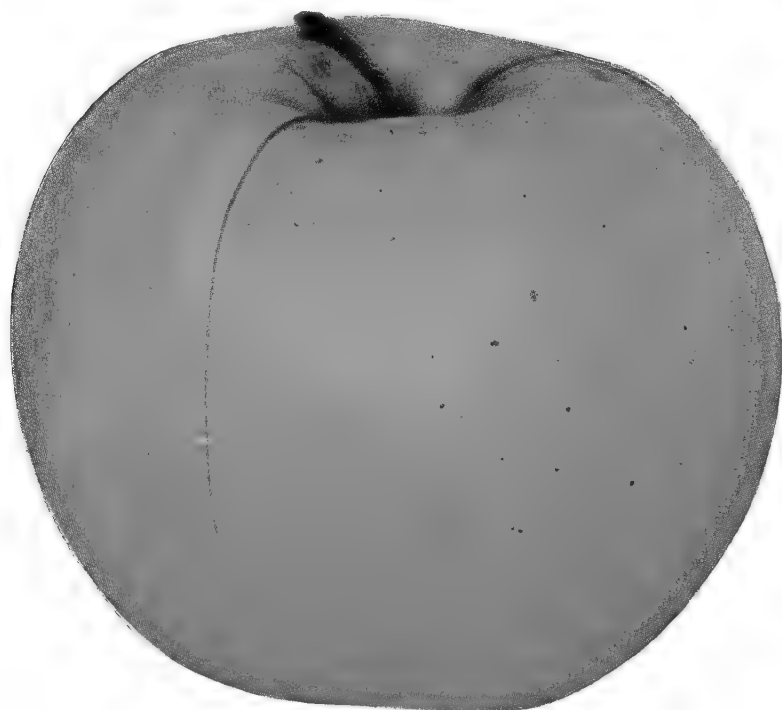
#### VERY ORNAMENTAL

Because of the large red, fragrant flowers in spring, this new apple makes an outstanding ornamental tree for planting on your lawn or in your garden. In an orchard its striking red flowers are a sight to behold as they stand out amongst all the other trees.

The tree is of a semi-dwarf type, and does not require as much space as most apples. The branches are strong forked and will bear well the large heavy crops of fruit.

The demand for trees of red fleshed apples is going to be tremendous and once they are sufficiently planted for the fruit to be sold on the market, it's hard to say how enormous the demand will be. You can be sure that for many years the fruit will command premium prices. Those who get started with these new fruits now will reap rewards for years to come.

PRICES: Each, \$2.25; 3 for \$6.50.



## Red Bellflower Apple

Size, flavor and quality of Bellflower, a favorite for centuries, and flesh color from the red-fleshed Niedzwetzkyana from Asia. A cross between these two, it has the combined hardiness of both. An introduction of Dr. N. E. Hansen and Carl A. Hansen from some new fruits they found in Siberia.

The flesh is crisp and fresh and tinged with pink with a gold color skin, a unique combination that is sure to make it in great demand throughout the country. Be the first in your community to have one.

PRICES: Each, \$2.25; 3 for \$6.50.

# First Time Offered

## Red Standard Apple

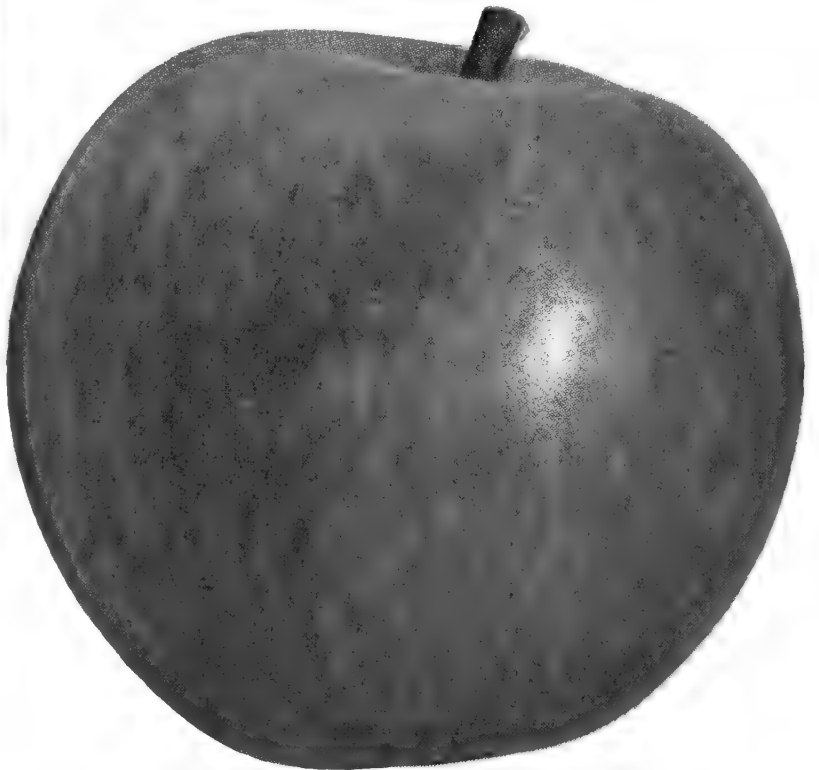
A Red Fleshed Apple that is up to 3 inches or more across. The flesh is firm and crisp, of superb flavor and the fruit will keep well into the winter.

This is an introduction of Dr. N. E. Hansen, who has made seven tours of Russia and Siberia, and Carl A. Hansen, who has made two. In their world-wide search for new and hardier plants, Red Standard was given to them by Ivan Mitchurin, world famous plant breeder of the Soviet Union. The "Red" is for its red flesh, and the "Standard" refers to its being a standard by which other apples may be judged, such as our Wealthy, Delicious or Jonathan.

It bears well on young trees, which are semi-dwarf in their habit of growth. The flowers are red, attractive and large—a beautiful ornamental as well as a good fruit tree. It can be planted most anywhere with good results and, because of its great hardiness, will produce abundantly for many, many years.

Red Standard is grand to eat fresh and makes a most delicious, Burgundy red apple sauce, or jam and jelly. The market possibilities of this new apple are unlimited and one can be sure of a premium price for the fruit.

**PRICES: Each, \$2.25; 3 for \$6.50.**



## Wincota Apple

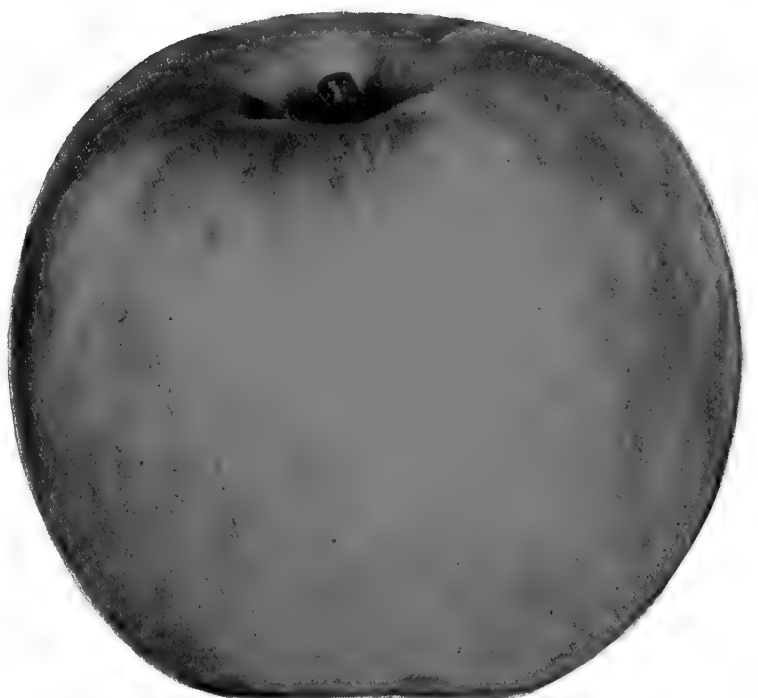
**"WINNER OF DAKOTA"**

**A Carl A. Hansen Introduction**

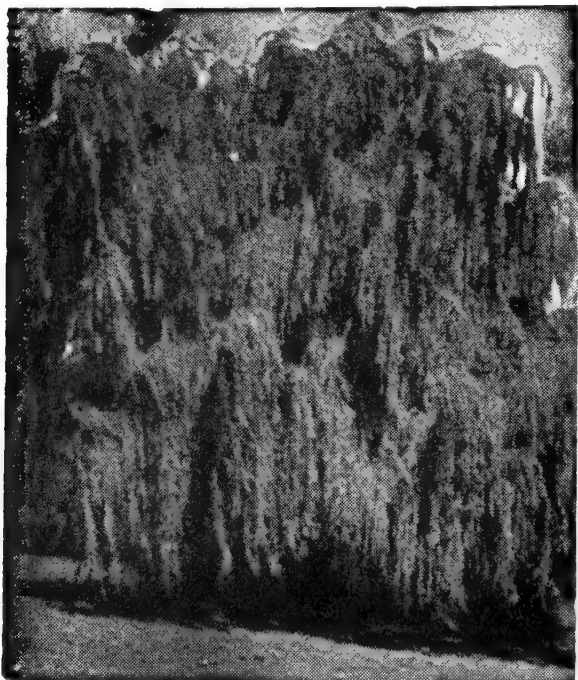
An excellent red apple with white flesh. Large, hardy and a heavy annual producer. Its firm, mellow sweetness melts in your mouth. It keeps well into winter and is excellent for preserves and sauce.

It has great commercial possibilities for the North especially, with its extreme hardiness and good quality, better than some of the varieties now grown here which are on the border line of hardiness. Only a very limited supply, so please order early.

**PRICES: Each, \$2.25; 3 for \$6.50.**



# NIOBE WEEPING WILLOW



3-4 Ft. Trees, Each 50c; 2 For 90c;  
 4-5 Ft. Trees, Each 75c; 2 For \$1.35.  
 5-6 Ft. Trees, Each \$1.25; 2 For \$2.25  
 6-8 Ft. Trees, Each \$1.75; 2 For \$3.25

## Graceful Beauty

Every Lawn Should Have Some

INTRODUCED BY PROFESSOR N. E. HANSEN

The superb, graceful beauty of the Niobe Weeping Willow is near to the utmost in distinctive specimen ornamental planting. There is no doubt that their beauty will be a continual joy to those who are fortunate enough to have these lovely trees on their home grounds. In winter and summer their graceful branches sway in the gentlest breeze and wave their beauty to all.

Prof. N. E. Hansen introduced Niobe Weeping Willow from the colder parts of Europe and so it is perfectly hardy far north into Canada. Beautify your grounds with this fine, hardy Weeping Willow.



Glorious Springtime Blossoms

### FOR THE LAWN OR BOULEVARD

The blossoming is followed by a mass of dense, bright green foliage, covering heavily shouldered and wide spreading branches, thus making it a fine shade tree for the street or lawn.

### A FINE FRUIT TREE—BEARS EARLY

Then comes the bright red and yellow fruits which can be used for jelly, or pickling, or are best pressed out and the juice added as the desired flavor in other fruit jams and jellies. The juice also makes remarkable cider. The tree usually bears when about three years old.

## Siberian FLOWERING CRAB

### GLORIOUSLY BEAUTIFUL

Its glorious, gorgeous, early spring magnificence adorned in an avalanche of large pink and white flowers of superb fragrance begins its alluring loveliness. This unquestionably makes it both a fine specimen ornamental for the lawn and wonderful as a street tree. Used in a windbreak, it gives the whole place a living frame of beauty.



Fruit Fair Size, Good Flavor. Makes Fine Jams, Jelly, Cider.

A commendable tree for ornament and utility. It must be seen and used to be fully appreciated.

### STURDY—DISEASE RESISTANT

The tree itself grows to a good height and lives long. Its growth is rapid, sturdy, and vigorous. It is very drought and disease resistant and because of its origin is absolutely hardy everywhere.

### A BEAUTIFUL WINDBREAK BACKGROUND

Being of such a well built nature with staunchly branched limbs and with such a fine heavy network of branches, it makes a splendid tall windbreak. Note our real low prices on windbreak stock, that we are able to offer you this year for groves and shelterbelts.

#### PRICES FOR STRONG, BRANCHED TRANSPLANTED, WELL ROOTED TREES

Size	Each	3	6	12
Large, 4-5 Ft.....	\$1.00	\$2.50	\$4.50	\$8.50
Medium, 3-4 Ft.....	.75	2.00	3.50	6.50
Small, 2-3 Ft.....	.50	1.25	2.25	4.00

#### WINDBREAK STOCK

Size	Per 10	Per 25	Per 100
6- 9 inch.....	\$ .65	\$1.50	\$ 5.00
9-12 inch.....	1.00	2.25	7.50
12-15 inch.....	1.35	3.00	10.00



# MAY DAY

THE BEAUTIFUL FLOWERING LAWN TREE

LOVELY . . FRAGRANT . . HARDY  
VIGOROUS

For superb flowering beauty on the lawn or boulevard, none excels May Day Tree. Its fragrant, fine white flowers early in spring create a massive bouquet of loveliness. The individual flowers are fully a half inch across. A few days later the leaves unfold in all their glossy beauty, far ahead of all the other trees.

## FIRST TO BLOOM

Always in bloom by the first of May here it was well named the May Day Tree, and the long racemes of fragrant white flowers, so thickly set on fine branches, may well be used for garlands and to crown the Queen of May.

## BIRDS ENJOY FRUIT

The shiny black cherry fruit, though edible and good for jelly, is soon claimed by the birds in preference to what we consider better fruit. Thus our good fruit is spared, yet the birds are fed.



Prof. N. E. Hansen and a May Day Tree.

May Day may be trimmed up for a street or lawn shade tree, or left in bush form as shown. It grows rapidly, reaching a height of fifteen to twenty feet at maturity. When used as a specimen plant on the open lawn it reaches its full majesty, but it may be used in the background of shrub groups as well.

## EXTREMELY HARDY

Having come from Siberia and Manchuria, there is no doubt as to its hardiness. The scientific name of this remarkable tree is *Prunus Padus Comutata*, but better call it May Day Tree for everyday.

### PRICES on MAY DAY TREES

Well Branched, 3 and 4 Year  
Ready to Bloom First Year

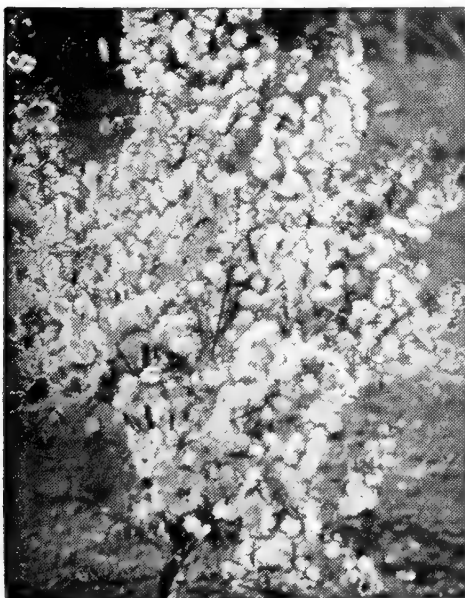
6-8 ft.....Each, \$2.50; 3 for \$7.00

5-6 ft.....Each, 1.75; 3 for 5.00

4-5 Ft.....Each, 1.25; 3 for 3.50



Close-Up View of the Flowers of the May Day Tree.



# ROSE TREE <sup>OF</sup> CHINA

This beautiful ornamental is worthy of a place in everyone's yard. A most unique tree, as the very youngest of them will put out the loveliest pink rose-like flowers you ever saw, even before it has begun to leaf out. It does look like a rose tree, and many people have given it the name of "Rose Tree of China." It is hardy everywhere and popular with those who have seen it.

*Prunus Triloba* is a small tree when grown, and might be called a shrub. The foliage, coming after flowers, is decidedly attractive and this plant will work in splendidly with most foundation and group plantings.

3-4 ft. Trees, Each, \$1.75; 3 for \$5.00

2-3 ft. Trees, Each, 1.25; 3 for 3.50



Lovely, Dark Red Flowers—Maroon-Red  
Cut-Leaf Foliage Tinsel with Silver.

# RED SILVER

## Flowering Crab

A CARL A. HANSEN INTRODUCTION  
A REAL WORTHWHILE  
ORNAMENTAL

The glorious flowering crab that is completely red in flower, leaf, bark and fruit. Makes a fine lawn tree. Rich maroon red from top to bottom. A very remarkable new ornamental recently introduced by Carl A. Hansen. Most flowering crabs are desirable because of the mass of blooms which they have in such profusion for a short time, but the Red Silver is beautiful from spring until late fall because of its all-over red color.

The underside of the leaves are tinsel with silver, making it all the more beautiful as the blend of maroon and silver is a unique combination throughout the season. The leaves are somewhat cut-leaf, adding to its striking beauty.

This small tree, graceful in its lines, with such beautiful foliage, has a color so intense that it is little affected by the summer heat. The flowers are a rich, deep red and altogether lovely. One of the greatest hardy flowering crabs ever introduced. Showy and different.

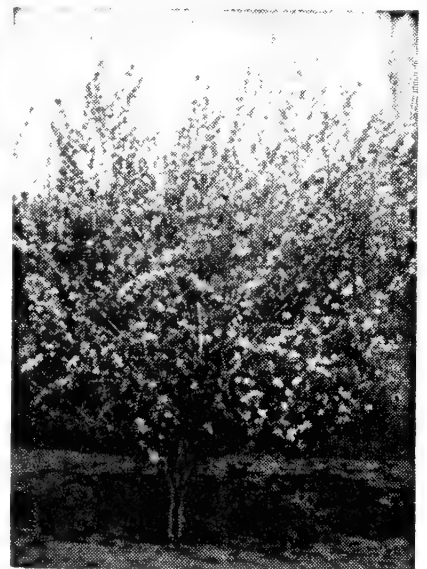
Size	Each	Per 2	Per 6
Large, 4-5 ft.....	\$2.00	\$3.75	\$10.75
Medium, 3-4 ft.....	1.50	2.80	8.20
Small, 2-3 ft.....	1.00	1.90	5.50

# HOPA-Rose Flowering Crab

Attractive . . . . . Cheery . . . . . Desirable

A NIELS E. HANSEN INTRODUCTION

A remarkable tree which is entirely covered with beautiful rose colored blossoms in May. Hopa is very hardy, blooms when but five feet in height, and is of such striking beauty that it deserves a place on every lawn. The fruit is red inside and out, and is very ornamental. The tree makes a very strong, well balanced growth. Hopa may be planted in a group with tall growing shrubbery, or it may be planted as a specimen tree with excellent results.



Beautiful Rose-Red Flowers  
in Early Spring

### HOPA PRICES

Size	Each
4-5 ft.....	\$2.00
3-4 ft.....	1.50
2-3 ft.....	1.00



Large Dark Red DOUBLE Flowers.

# DAKOTA BEAUTY

## Double Red Flowering Crab

A Carl A. Hansen Introduction

It is with a great deal of pride that we now offer a **double** red flowering crab, and the hardiest one of its type in the world. There have been double flowering crabs before. There have been red flowering crabs before. But never has there been a double red flowering crab with the supreme, ultra hardiness of this one. In addition, it has a fair sized fruit with red flesh that is fair eating fresh, and just the thing to put red coloring into your apple sauce and preserves.

Plant Patent  
No. 648

PRICE **\$2.50** EACH

# Every Man's Orchid

## HANSEN'S NEW SHILKA IRIS Everblooming ORCHID IRIS

From the wilds of Siberia, near the town of Shilka, comes this new, hardy, Everblooming Orchid Iris, which was brought to this country by Carl A. Hansen from one of his world-wide plant exploration expeditions.

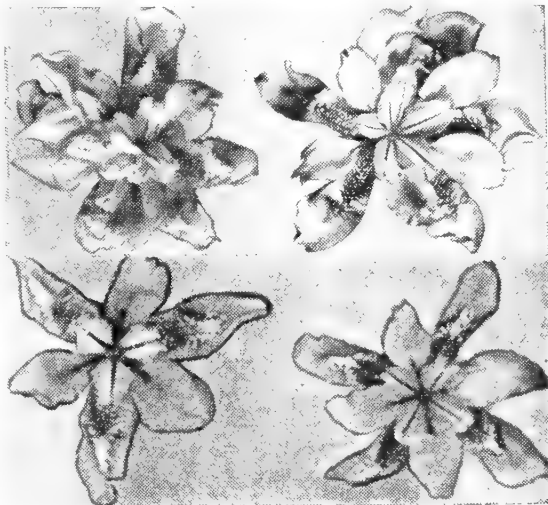
A real hardy outdoor perennial for the Northwest. It blooms continuously for six to eight weeks after all other Irises are gone. Its wide, spreading blooms possess lovely, delicate tones of superb orchid and blue, mingled with creamy white as found in the finest orchids.

With this latest addition to the Iris family, it is now possible for everyone to have flowers growing in their own gardens, so like the expensive orchids. Long slender stems bear as many as twelve to fifteen superbly beautiful flowers on each plant, all at one time, hundreds before the season is over.

The flowers of the new Shilka are delicately fragrant, a remarkable attribute to an already beautiful flower. Many of the blossoms come double.

The foliage, like other Irises, is attractive all through the season, in beds or in border plantings.

Everyone who likes Irises should plant this newest and finest, Shilka Iris.



Shilka Iris Flowers

### PRICES ON SHILKA IRIS

#### LARGE SIZE ROOTS

Ea., 50c; 3, \$1.35; 12, \$5.00

#### MEDIUM SIZE ROOTS

Ea., 35c; 3, \$1.00; 12, \$3.50

## The Hansen FERN LEAF PEONY

### EARLIEST OF ALL!

Another very fine ornamental introduction by Prof. N. E. Hansen. This new Peony has beautiful, very showy, red flowers with orange-yellow centers. They make a most attractive showing and are so welcome at the time of year they bloom.

Siberian Fern-Leaf Peonies are the very first of the Peonies to bloom, from ten days to two weeks ahead of all others, and are about the only flowers at that time of year.



Attractive Cut-Leaf Foliage and Dark Red Flowers

The plant itself is very attractive all through the season, with its fine, cut-leaf, fern-ilke foliage in contrast to other varieties. This Peony is very hardy, resistant to drought and leaf spot. Our supply of these plants is not large, so send your orders as early as you can.

**Special . . .**

**3 Shilka Iris**

**1 Fern-Leaf Peony**

LARGEST SIZES

**Both Only . . . \$3.50**

**Hansen Fern-Leaf Peonies**

**Large 3-Year Roots . . . \$2.50 Each**

# HARDY ROSES

Make Your Dreams Come True

To many there is no flower in the garden lovelier than a rose, yet, contrary to the opinion of many, they are easy to grow if the proper simple care and attention is given them. We sell only the hardiest sorts that have proven themselves in home gardens throughout the Northwest.

**HANSA.** Best Hardy Red Rose. Large, double flowers over an unusually long blooming season. Sturdy growth and absolute hardiness.

**SIR THOMAS LIPTON.** Best Hardy White Rose. Large, double, pure white. Profuse bloomer.

**BELLE POITEVINE.** Good Hardy Pink Rose. Very large, double, fragrant flowers of a bright silvery rose-pink.

**CRIMSON RAMBLER.** Famous everywhere. Vigorous grower, glossy foliage, panicles of blooms, large and perfect for weeks.



Hansa Rose

**HANSEN SIBERIAN ROSE**

**NEW HARDY ROSE INTRODUCTION  
BY N. E. HANSEN**

Beautiful pink blossoms all summer long. Sturdy, large growing, for background in group plantings, or as single shrubs. The hardiest rose grown.

**PRICES FOR THESE HARDY ROSES**  
Each, 75c; 3 for \$2.00;  
6 for \$3.50.

## A Sensational New Rose . . . HANSEN'S THORNLESS A Rose Without Thorns!

Prof. N. E. Hansen is working with thousands of rose seedlings and is attracting nation wide attention for his efforts toward producing lovely, hardy roses without thorns.

His Thornless Rose we offer here is really thornless. Not only on the main stems, but on the branches as well. The plant is of sturdy upright growth with attractive foliage, which makes it desirable as a shrub, and it is perfectly hardy as it will stand fifty degrees below zero without protection.

The flowers are of a delicate pink color and very fragrant. The branches likewise are very attractive, being a bright glowing red throughout the year. The red seed pods clinging to the red stems in winter time makes them very ornamental.



N. E. Hansen and  
His Thornless Rose

**THORNLESS ROSE PRICES**

LARGE SIZE PLANTS

Each, \$1.00; 3 for \$2.75

6 Roses, \$5.00.

## The New Hansen Hedge Rose

THE STATELY, BEAUTIFUL HEDGE

The most beautiful of all hedges. These roses were introduced from Siberia some years ago by Prof. Hansen and have been developed by him for years to improve their

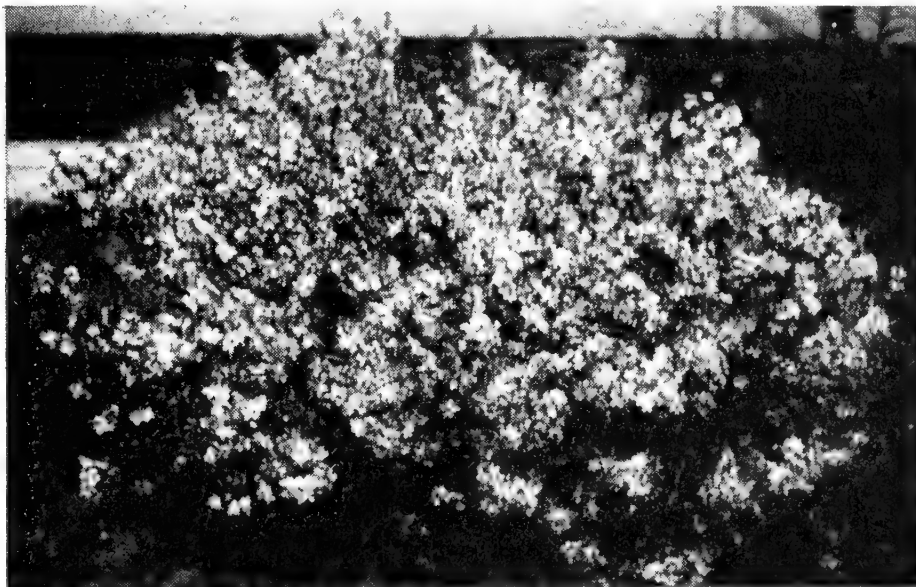
size and beauty. The flowers are quite large, fragrant and beautiful. With a hedge of these roses around your lawn you will have a flowering border of beauty to frame your home which will be a continual joy and everlasting pleasure throughout the years to come. Buy them now and beautify your place beyond your fondest dreams.



**HEDGE ROSE PRICES**  
Strong 2 and 3 Yr. Plants  
100 Plants, \$17.50  
25 Plants, \$5.00.

# DWARF FLOWERING ALMOND

A Glorified Shrub of Alluring Loveliness



Georgeous Blooms Cover the Plant

## HARDIEST DWARF ORNAMENTAL

The Dwarf Flowering Almond is a beautiful lawn shrub which is destined to great popularity. It is perhaps the hardiest of dwarf ornamentals as it is native of Siberia.

## EARLIEST TO BLOOM

Before other shrubs are out and its own leaves appear, it is covered with bright rose-pink, fragrant flowers. It remains a beautiful mass of blooms for nearly three weeks. The flowers being fragrant and of such brilliant hue, are valuable for bouquets in the house.

In the fall the leaves turn to a pretty gold and red color to brighten the landscape.



Fine as a Low Flowering Hedge.

### PRICES FOR DWARF FLOWERING ALMOND

Size	Each	3	6
Large	\$ .75	\$2.00	\$3.50
Medium	.50	1.25	2.25

Extra Large Specimen  
Plants: \$1.25 Each.

### SPECIAL!

Dwarf Flowering Almond will form a beautifully symmetrical, natural hedge about 3 feet high if not trimmed. Plant 12-18 in. apart.

### HEDGING STOCK PRICES

Per 10	Per 25	Per 100
\$3.00	\$6.50	\$25.00



Plant in Front of Taller Shrubs.

## Hansen's Dwarf FLOWERING CHERRY

A New Hardy Dwarf Cherry which, though it has large dark red fruits of good quality, its main charm lies in its beautiful fragrant flowers early in spring. Blooms profusely for a long time.

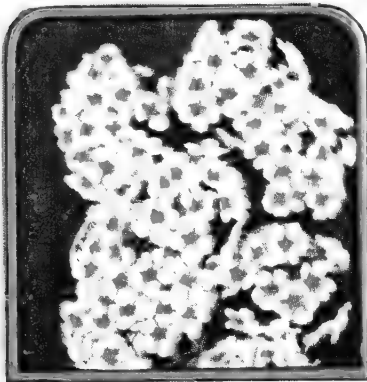
The branches are slender and are completely covered with flowers before the leaves appear. They make excellent bouquets for the house and keep on blooming for many days in a vase of water.

The flowers vary from a light shell pink to white, and sometimes come double.

PRICES: Each, 75c; 3 for \$2.00; 6 for \$3.50.



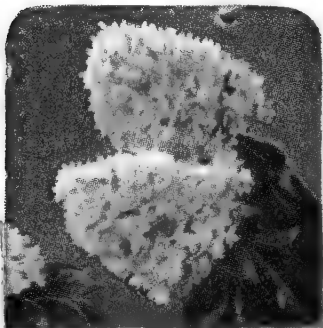
# Best Ornamental Shrubs



Spirea Van Houttei

**SPIREA VAN HOUTTE.** The most popular of all shrubs. Known also as Bridal Wreath. Extremely hardy and easy to grow. The foliage is fine and dense making it an ideal ornamental for foundation plantings, for hedges, for a specimen shrub, or in groups with other ornamentals. It blooms profusely and

the small white flowers are borne in tiny clusters all along the slender, pendulant branches. These long sprays of flowers are ideal for mixed bouquets.



Hydrangea P. G.

**HYDRANGEA, P. G.** A very beautiful shrub with heavy foliage. Blossoms in late summer and fall, having many huge clusters of creamy white flowers that turn to pink and rose. Especially fine for cutting—last so long.

**GOLDEN ELDER.** A large shrub with heavy, large, yellow leaves. Bears flat clusters of white blossoms and later produces heavy bunches of shiny dark fruit that attracts birds. Especially hardy and strong growing.



Mock Orange

**MOCK ORANGE.** An upright growing shrub, producing an abundance of large white, fragrant flowers in May and June. One of the taller shrubs.

**SPIREA, A. W.** A very dwarf ornamental shrub that makes a lovely low hedge, or may be planted in front of other shrubs. Has small bunches of bright red flowers from June until September.



Spirea Anthony Waterer

**FORSYTHIA, Golden Bell.** One of the earliest shrubs to bloom in the spring. Very showy, with its intense yellow flowers. An upright bush with dark green foliage and bronze fall coloring.



Forsythia

**PERSIAN LILAC.** A fine leaved lilac with large panicles of reddish purple flowers in spring. Does not sprout from the roots, making it better for group plantings.

**JAPANESE BARBERRY.** A low growing shrub with drooping sprays of bright green foliage. Turns to brilliant hues in autumn. Red berries hang on in winter. Excellent for borders.



Japan Barberry

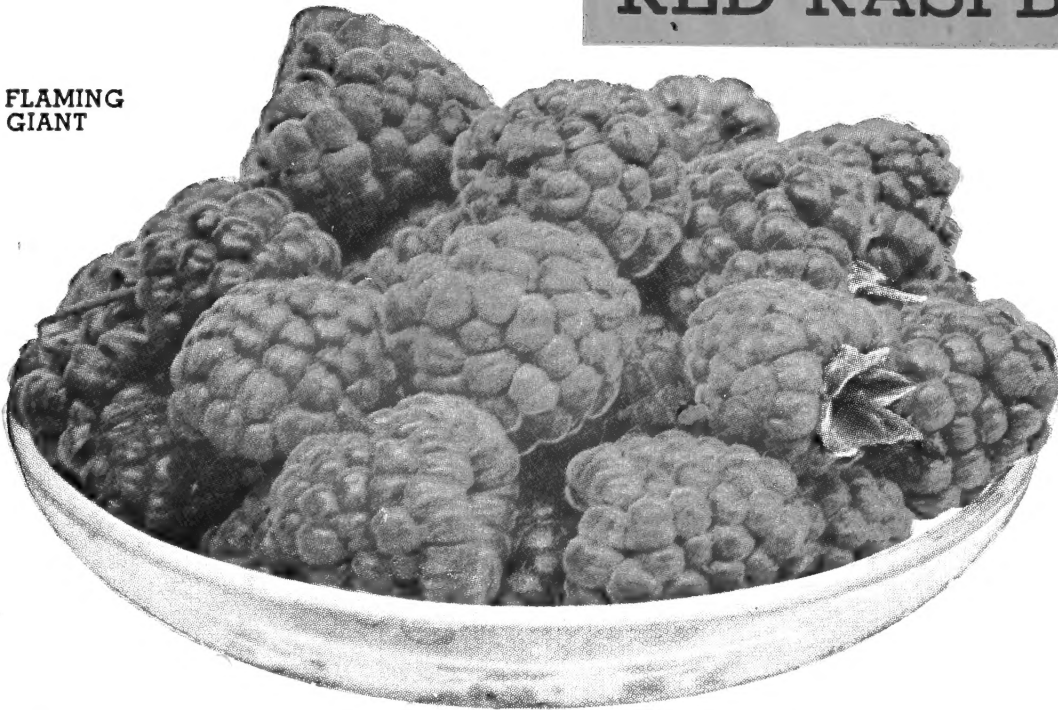
## PRICES FOR ABOVE SHRUBS

Size	Each	Per 3	Per 6
Large, 2-Yr.....	\$ .85	\$2.35	\$4.50
Medium, 2-Yr.....	.60	1.60	3.00

**SNOWBALL.** A well known, tall growing, hardy shrub with strong upright branches and dense foliage. So named because of the masses of white flowers in April and May that resemble snowballs clinging to the branches. May be included in group plantings and makes an ideal specimen plant in a conspicuous place on the lawn.

# RED RASPBERRIES

**FLAMING GIANT**



## Small Fruit Special

•  
**25**  
 Flaming Giant  
 Red Raspberry  
 and  
**10**  
 Thornless  
 Boysenberry  
 All for  
**Only \$5.00**

**FLAMING GIANT.** This is Prof. Hansen's best and most popular red raspberry. Originally called Ohta, which in the Sioux Indian language means "much" or "many." In later years it has been called Flaming Giant, because of the large size and flaming red color of the fruit. Berries are purplish red, large, excellent flavor and good keepers. Is called everbearing by some because it bears very heavily and annually and over a long period of time. Hardy and drouth resistant. Makes a splendid berry for market and for home use. Early. Hardest of red raspberries. Does not winter kill. Will stand 30 below without damage. **5 Plants, \$1.00; 10 Plants, \$1.75; 25 Plants, \$3.25.**

**SUNBEAM.** One of Prof. N. E. Hansen's first red raspberry introductions and now famous throughout the Northwest. Plant vigorous, productive, purple-caned, and freely sprouting. Has survived a temperature of 41 degrees below zero, without protection. Fruit of large size and bright red color. **5 Plants, \$1.00; 10 Plants, \$1.75; 25 Plants, \$3.25.**

**LATHAM.** Generally considered the best market berry because of its enormous size and good color, its fine flavor and extra heavy bearing. Bushes are just loaded to the ground with their great crop of fruit. A great favorite everywhere. Very productive, long bearer. Deep blood red fruit. **5 Plants, \$1.00; 10 Plants, \$1.75; 25 Plants, \$3.25.**

# THORNLESS BOYSENBERRY

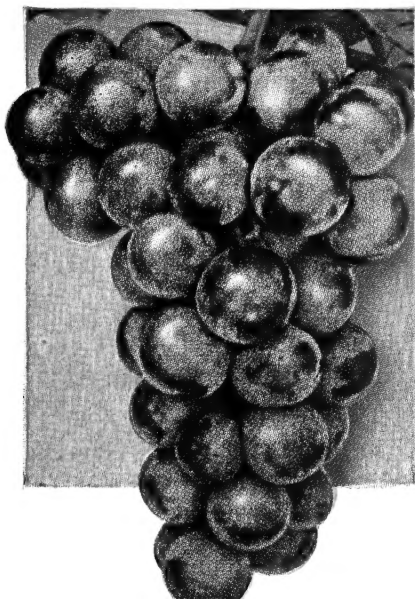
One of the most famous of recent new berry introductions.

Fruit is a dark bluish black, large, somewhat resembling a dewberry and blackberry, but much longer and larger. In fact, fruits often grow in size to 2 1/2 inches long and 1 inch in diameter. Very sweet to eat fresh, especially when served with cream. They also make delicious pies and preserves.

The plants produce long branches close to the ground, making the fruit easy to pick, and this new variety, being thornless, makes picking much easier.

### PRICES While They Last

Each.....35c    10 for.....\$2.50    25 for.....\$6.00



# GRAPES

**BETA GRAPE.** Best known hardy grape. Amazingly large crops of fine fruit. Good eating and excellent preserves, jelly and grape juice. For the middle northwest. **Each, 40c; 5 Vines for \$1.75.**

**CONCORD GRAPE**—A very vigorous grower; and very productive. Hardier than most varieties. One of the best commercial grapes. Of best dessert quality for the table. **Each, 35c; 5 Vines for \$1.50.**

**HANSEN GRAPE.** This new Hansen Grape will do much toward changing the grape culture of America, because of its great hardiness and splendid flavor and quality. For fresh grapes for table use, grown on your own vines, and delicious grape jelly and preserves, and grape nectar, be sure to get this new hardy Hansen Grape. **Each, 75c; 3 for \$2.00.**

# CHINESE ELM

The Fastest Growing Permanent Tree Known

## HARDY—EASY TO GROW

This remarkable Elm for street and lawn is fast becoming the leading Elm throughout America. It grows faster, is more drouth resistant, longer lived, grows larger and is hardier than any other shade or street tree grown. It is much finer than the ordinary Elm, the foliage is fine and feathery, a bright green, and very dense, and the branches make almost right angles with the trunk instead of being in sprays like the common Elm.

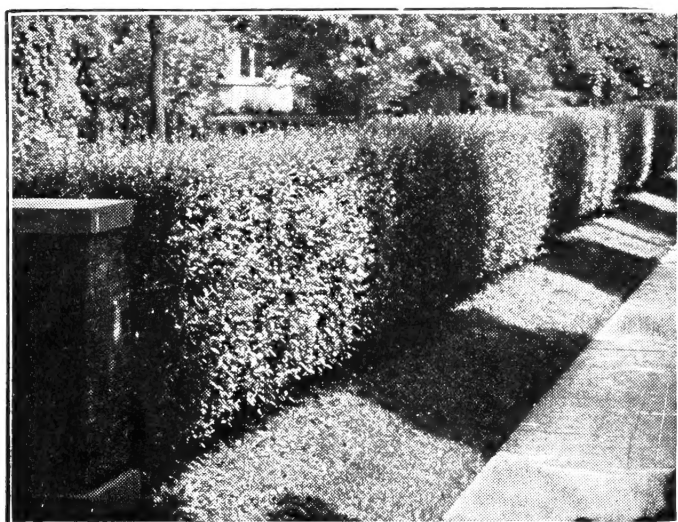
Size	Each	Per 3	Per 6	Per 12
4-5 Foot Trees.....	\$0.50	\$1.35	\$2.50	\$ 4.75
5-6 Foot Trees.....	.75	2.00	3.75	7.25
6-8 Foot Trees.....	1.25	3.50	6.50	12.50

## SEEDLINGS FOR WINDBREAKS AND HEDGES

Size	Per 25	Per 100
12-18 Inch Seedlings.....	\$1.00	\$3.50
18-24 Inch Seedlings.....	1.40	5.00
2-3 Foot Seedlings.....	2.00	7.50

# CARAGANA - SIBERIAN PEA TREE

ONE OF THE BEST WINDBREAK AND HEDGE PLANTS FOR THE NORTHWEST



Trimmed Hedge to Surround the Lawn.

By far the hardiest and best windbreak and hedge plant for the most exposed prairies is Caragana, and one which will endure severe drouth. This plant is recognized by the Canadian Government as the best snow-catcher and hedge plant from Manitoba, Saskatchewan, and Alberta. Its full name is Caragana arborescens, the latter name referring to the tree-like habit. It is not really a tree but a shrub of tree-like habit growing to a height of about twenty feet when not trimmed.

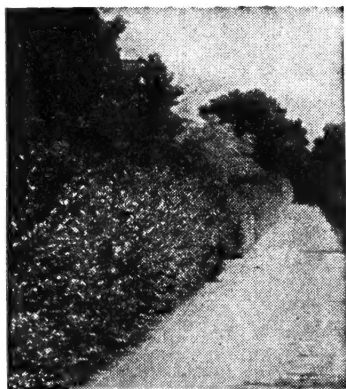
## PRICES FOR STRONG, HEAVY, WELL ROOTED PLANTS

Size	Per 25	Per 100
9-12 Inch.....	\$1.05	\$ 3.75
12-18 Inch.....	1.80	6.75
18-24 Inch.....	2.75	10.50
2- 3 Foot.....	3.75	14.50

Extra Large, for Specimen Planting, 35c Each.

# Siberian Bush Honeysuckle

FOR SHELTER AND ORNAMENT



Trimmed—A Wall of Beauty

Plant Bush Honeysuckle as specimens on the lawn, and for windbreaks and hedges. Their great loads of beautiful rose-pink and white flowers in spring delight everyone and later the ornamental red or orange berries furnish food for the birds. Plant a row on the outside of your windbreak to catch the snow on the north or west. Plant a row or two on the inside to furnish beautiful flowers. Plant a row wherever you wish a screen to hide outbuildings or service yard. Trim them down low or let them grow naturally to their full height of fifteen to twenty feet.

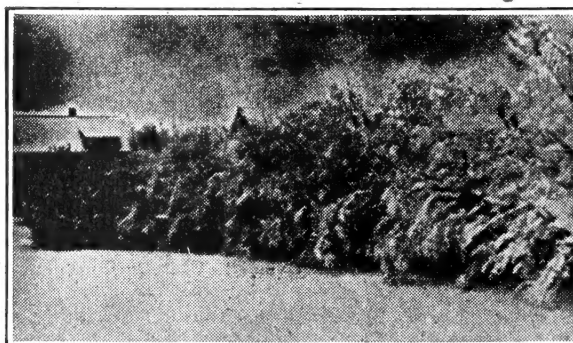
These Bush Honeysuckles from Siberia are from a dry region with temperatures ranging from 50 below to 100 or more above, and only eight inches annual rainfall. They will never winter kill or suffer from drouth.

Most windbreaks grow too tall with age, leaving the lower stems bare. Bush Honeysuckle branches are not broken by heavy snows, and they retain their lower branches always, stopping the wind perfectly the first twenty-feet next to the ground.

## PRICES FOR STRONG BUSHY PLANTS

Size	Each	Per 10	Per 25	Per 100
12-18 Inch.....	\$0.30	\$2.50	\$5.00	\$17.50
18-24 Inch.....	.50	4.50	7.00	25.00

Extra Large Plants for Specimen Planting, 75c Each.  
3 for \$2.00. 6 for \$3.50.



A Beautiful Sight in Winter



# HANSEN PROSO

## THE DRY LAND WONDER GRAIN !



One Bundle of Proso  
Grown in Western S. Dak.

The Best Catch Crop for the Northwest—Matures in 60 Days. Can Be Planted Later and Will Stand More Dry Weather Than Any Other Grain.

Here is an all-purpose grain that farmers have been looking for. It matures quickly, is an abundant producer, very drouth resistant, makes good forage, can be planted late, has white kernels, is good food for live stock and poultry, makes a fine breakfast food, is a heavy grain, and grows in any soil.

**Best Catch Crop.** Proso matures in 60 to 70 days, and should not be sown until after the middle of May. It may even be planted as late as July.

**Stands More Dry Weather Than Any Other Grain.** During the drouth, many farmers seeded Proso after the other crops had failed, and when the late rains came they had plenty of feed.

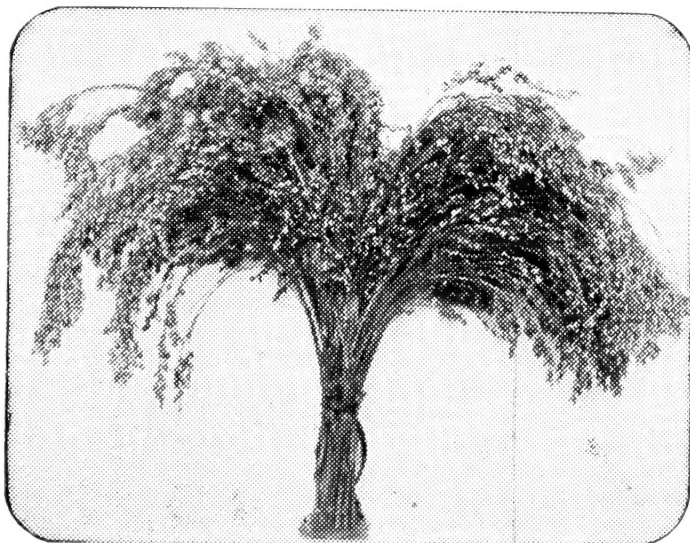
**Pasture and Forage.** Proso may be pastured until it heads out. It is equally good pasture after harvest until frost. If planted real early, Proso furnishes pasture for those who are short on feed. Proso straw makes a wonderful forage because it retains its green color and does not chaff.

**Ideal for Cattle and Hogs.** Proso grain is considered one of the best feeds for live stock, equal to or better than wheat. Farmers tell us that ground Proso is equal to corn in finishing off live stock for market.

**Ideal for Poultry.** In a very interesting poultry feeding test with White Proso mixed with corn, oats, barley and wheat, none of the others were touched until the Proso was gone. It is very valuable because of its high protein content. Proso does not have to be threshed for poultry feeding, but may be fed in shock.

**Makes Fine Breakfast Food.** Carl A. Hansen, while studying seeds and plant life in Russia, noticed that Proso was used extensively as a food. He experimented with it and by puffing it obtained a very tasty breakfast food, which he named Proso Puffs.

**White Kernel. Improved Strain.** Prof. N. E. Hansen, the famous plant wizard, introduced the Hansen Proso from Siberia, and selected it for its white color, large kernels, and greater productivity. The seed is round, pure white, several times the size of millet, growing in a sprangly head. It should not be confused with the colored prosos, as Hansen's Proso is superior in every way: size, color, and production.



**HOW TO PLANT.** Proso may be planted on any kind of land, either broadcast or drilled. Weeds may be plowed under two or three times and killed before it is time to plant Hansen Proso. Many farmers report that by planting Hansen Proso in late May or June, the plants will produce 15 to 25 stems each. Proso may be harvested with a combine or it may be shocked and threshed. For combining it should be ripe, but for shocking it should be cut when the stalks are still quite green. Average yield of Hansen Proso is from 40 to 60 bushels per acre with a seeding of 20 to 30 lbs. per acre. The grain averages 60 to 64 lbs. per bushel.

### PRICES ON HANSEN PROSO

BY MAIL POSTPAID

Large 4-oz. Pkt., 35c; 5 Lbs., \$1.50.

BY EXPRESS OR FREIGHT COLLECT

10 lbs., \$2.00; 25 lbs., \$3.50; 50 lbs., \$5.00;

100 lbs., \$9.50; 500 lbs., \$45.00;

1,000 lbs., \$85.00.

# N. E. HANSEN'S NEWEST HARDY ROSES

*Double . . . Hardy . . . Gorgeous*

## ZITKALA ROSE

**Red Thornless Beauty**

Dr. N. E. Hansen's most recent and best **double** red rose introduction. A rich red, highly fragrant, very double. The large flowers are borne on long smooth red stems. No thorns at all except on the extreme lower base of the plant. Extremely hardy. Blooms over a very long time in mid-summer. **Each, \$1.50.**

## ALIKA

One of the best hardy double red roses, found in seven tours to Russia, including one from the capitol of Russia to Vladivostok. Richly fragrant. Alika merits wide popularity. **Each, \$1.50.**

## TETONKAHA

His first pink hybrid of our prairie rose of South Dakota. Very free blooming and fragrant. 25 to 35 petals or more. **Each, \$1.50.**

## LILLIAN GIBSON

A beautiful, dazzling, very double pink, and fragrant. Blooms freely throughout the summer. **Each, \$1.50.**

## SIOUX BEAUTY

A beautiful red of the Siberian Rosa Rugosa and the American Beauty Rose. Very fragrant. Up to 65 petals. **Each, \$1.50.**



---

*Hansen's*  
**HARDIEST**  
*Hybrid*  
**TEA**  
**ROSES**

---

**No Garden Is Complete Without a Few Hybrid Tea Roses.**

They are easy to grow and sure to produce fine large flowers from early summer till late fall. For best results in most places and more lovely flowers, fertilize and mulch them and give them some winter protection. Here are five of the hardiest and best Hybrid Tea Roses for general planting throughout the Northwest.

**ROUGE MALLERIN**—A good deep velvety red.

**EDITOR McFARLAND**—Abundant brilliant pink blooms.

**K. A. VICTORIA**—Lovely white, with rare fragrance.

**GOLDEN CHARM**—Exceptionally fine large yellow.

**PRES. HOOVER**—Rich red and gold two-tone beauty.

*Only*  
**69¢**  
*Each*